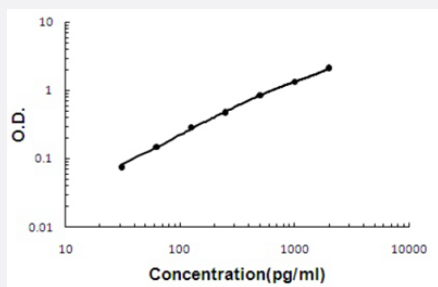


KLB (Human) ELISA Kit

Catalog # KA5145 Size 1 Kit

Applications



The standard curve is for the purpose of illustration only and should not be used to calculate unknowns. A standard curve should be generated each time the assay is performed.

Specification

Product Description	KLB (Human) ELISA Kit is a sandwich enzyme-linked immunosorbent assay for quantitative detection of human Klotho beta in cell culture supernates, cell lysates, serum and plasma (heparin, EDTA).
Suitable Sample	Cell culture supernates, cell lysates, serum and plasma (heparin, EDTA)
Sample Volume	100 uL
Label	HRP-conjugated
Detection Method	Colorimetric
Assay Type	Quantitative
Calibration Range	31.2 to 2000 pg/mL
Reactivity	Human
Regulatory Status	For research use only (RUO)
Quality Control Testing	Standard curve The standard curve is for the purpose of illustration only and should not be used to calculate unknowns. A standard curve should be generated each time the assay is performed.
Storage Instruction	Store at 4°C for six months. For long term storage store at -20°C. Avoid repeated freezing and thawing.

Applications

- Quantification

Gene Info — KLB

Entrez GeneID	152831
---------------	------------------------

Gene Name	KLB
-----------	-----

Gene Alias	BKL, MGC142213
------------	----------------

Gene Description	klotho beta
------------------	-------------

Omim ID	611135
---------	------------------------

Gene Ontology	Hyperlink
---------------	---------------------------

Other Designations	klotho beta like
--------------------	------------------