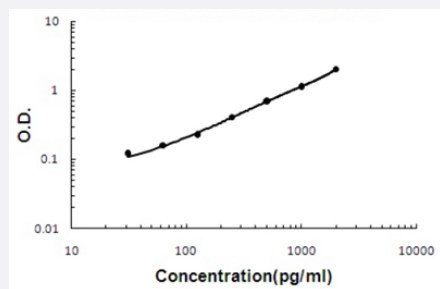


A1BG (Human) ELISA Kit

Catalog # KA5144 Size 1 Kit

Applications



The standard curve is for the purpose of illustration only and should not be used to calculate unknowns. A standard curve should be generated each time the assay is performed.

Specification

Product Description	A1BG (Human) ELISA Kit is a sandwich enzyme-linked immunosorbent assay for quantitative detection of human alpha 1B-glycoprotein in cell culture supernates, cell lysates, serum and plasma (heparin, EDTA).
Suitable Sample	Cell culture supernates, cell lysates, serum and plasma (heparin, EDTA)
Sample Volume	100 uL
Label	HRP-conjugated
Detection Method	Colorimetric
Assay Type	Quantitative
Calibration Range	31.2 to 2000 pg/mL
Reactivity	Human
Regulatory Status	For research use only (RUO)
Quality Control Testing	Standard curve The standard curve is for the purpose of illustration only and should not be used to calculate unknowns. A standard curve should be generated each time the assay is performed.

Storage Instruction

Store at 4°C for six months. For long term storage store at -20°C.
Avoid repeated freezing and thawing.

Applications

- Quantification

Gene Info — A1BG

Entrez GeneID	1
Gene Name	A1BG
Gene Alias	A1B, ABG, DKFZp686F0970, GAB, HYST2477
Gene Description	alpha-1-B glycoprotein
Omim ID	138670
Gene Ontology	Hyperlink
Gene Summary	The protein encoded by this gene is a plasma glycoprotein of unknown function. The protein shows sequence similarity to the variable regions of some immunoglobulin supergene family member proteins. [provided by RefSeq]
Other Designations	alpha 1B-glycoprotein