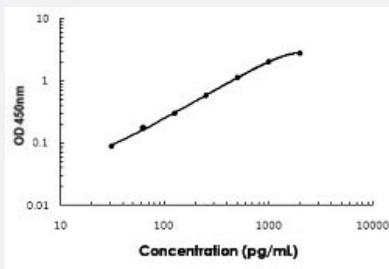


# Elane (Mouse) ELISA Kit

Catalog # KA5126      Size 1 Kit

## Applications



The standard curve is for the purpose of illustration only and should not be used to calculate unknowns. A standard curve should be generated each time the assay is performed.

## Specification

<b>Product Description</b>	Elane (Mouse) ELISA Kit is a sandwich enzyme-linked immunosorbent assay for the quantitative measurement of mouse Elane in cell culture supernates, cell lysates, serum and plasma (heparin, EDTA ).
<b>Suitable Sample</b>	Cell culture supernates, Cell lysates, Serum and Plasma (heparin, EDTA)
<b>Sample Volume</b>	100 uL
<b>Label</b>	HRP-conjugated
<b>Detection Method</b>	Colorimetric
<b>Assay Type</b>	Quantitative
<b>Calibration Range</b>	31.2 to 2000 pg/mL
<b>Reactivity</b>	Mouse
<b>Regulatory Status</b>	For research use only (RUO)
<b>Quality Control Testing</b>	Standard curve The standard curve is for the purpose of illustration only and should not be used to calculate unknowns. A standard curve should be generated each time the assay is performed.
<b>Storage Instruction</b>	Store at 4°C for 6 months, at -20°C for 12 months. Avoid multiple freeze-thaw cycles.

## Applications

- Quantification

## Gene Info — Ela2

Entrez GeneID	<a href="#">50701</a>
---------------	-----------------------

Gene Name	Ela2
-----------	------

Gene Alias	F430011M15Rik, NE
------------	-------------------

Gene Description	elastase 2, neutrophil
------------------	------------------------

Gene Ontology	<a href="#">Hyperlink</a>
---------------	---------------------------

Gene Summary	O
--------------	---

Other Designations	neutrophil elastase
--------------------	---------------------