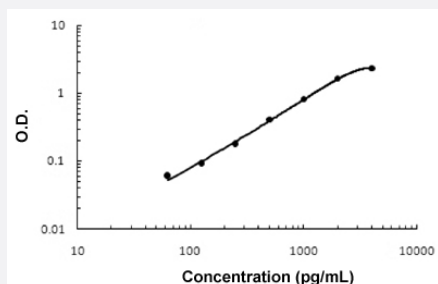


Hfe2 (Rat) ELISA Kit

Catalog # KA5120

Size 1 Kit

Applications



The standard curve is for the purpose of illustration only and should not be used to calculate unknowns. A standard curve should be generated each time the assay is performed.

Specification

Product Description	Hfe2 (Rat) ELISA Kit is a sandwich enzyme-linked immunosorbent assay for the quantitative measurement of rat Hfe2.
Suitable Sample	Cell Culture Supernates, Cell Lysates, Plasma (EDTA, Heparin), Serum
Sample Volume	100 μ L
Label	HRP-conjugate
Detection Method	Colorimetric
Assay Type	Quantitative
Calibration Range	62.5 to 4000 pg/mL
Reactivity	Rat
Regulatory Status	For research use only (RUO)
Quality Control Testing	Standard curve The standard curve is for the purpose of illustration only and should not be used to calculate unknowns. A standard curve should be generated each time the assay is performed.
Storage Instruction	Store at 4°C for 6 months, at -20°C for 12 months. Avoid multiple freeze-thaw cycles.

Applications

- Quantification

Gene Info — Hfe2

Entrez GeneID [310681](#)

Protein Accession# [Q8N7M5](#)

Gene Name Hfe2

Gene Alias MGC105910, Rgmc

Gene Description hemochromatosis type 2 (juvenile) (human homolog)

Gene Ontology [Hyperlink](#)

Gene Summary member C|hemochromatosis type 2 (juvenile) homolog|hemojuvelin

Other Designations RGM domain family, member C|hemochromatosis type 2 (juvenile) homolog|hemojuvelin