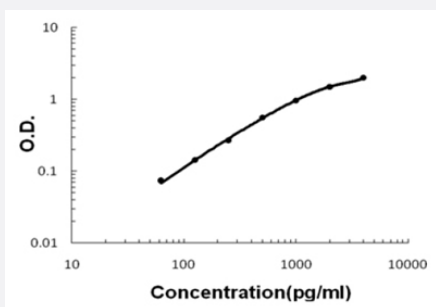


Chrd (Mouse) ELISA Kit

Catalog # KA5096 Size 1 Kit

Applications



The standard curve is for the purpose of illustration only and should not be used to calculate unknowns. A standard curve should be generated each time the assay is performed.

Specification

Product Description	Chrd (Mouse) ELISA Kit is a sandwich enzyme-linked immunosorbent assay for quantitative detection of mouse Chordin in cell culture supernates, cell lysates, serum and plasma (heparin, EDTA).
Suitable Sample	Cell culture supernates, cell lysates, serum and plasma (heparin, EDTA)
Sample Volume	100 uL
Label	HRP-conjugated
Detection Method	Colorimetric
Assay Type	Quantitative
Calibration Range	62.5 to 4000 pg/mL
Reactivity	Mouse
Regulatory Status	For research use only (RUO)
Quality Control Testing	Standard curve The standard curve is for the purpose of illustration only and should not be used to calculate unknowns. A standard curve should be generated each time the assay is performed.
Storage Instruction	Store at 4°C for six months. For long term storage store at -20°C. Avoid repeated freezing and thawing.

Applications

- Quantification

Gene Info — Chrd

Entrez GeneID	12667
---------------	-----------------------

Gene Name	Chrd
-----------	------

Gene Alias	Chd
------------	-----

Gene Description	chordin
------------------	---------

Gene Ontology	Hyperlink
---------------	---------------------------

Other Designations	OTTMUSP00000023072
--------------------	--------------------