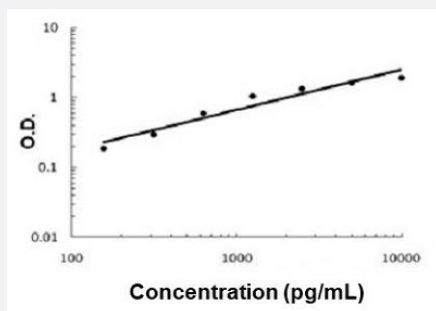


# KLK12 (Human) ELISA Kit

Catalog # KA5090      Size 1 Kit

## Applications



The standard curve is for the purpose of illustration only and should not be used to calculate unknowns. A standard curve should be generated each time the assay is performed.

## Specification

<b>Product Description</b>	KLK12 (Human) ELISA Kit is a sandwich enzyme-linked immunosorbent assay for quantitative measurement of human KLK12 in cell culture supernates, cell lysates, serum and plasma (heparin, EDTA).
<b>Suitable Sample</b>	Cell culture supernates, Cell lysates, Plasma, Serum
<b>Sample Volume</b>	100 $\mu$ L
<b>Label</b>	HRP-conjugated
<b>Detection Method</b>	Colorimetric
<b>Assay Type</b>	Quantitative
<b>Calibration Range</b>	156 - 10000 pg/mL
<b>Reactivity</b>	Human
<b>Regulatory Status</b>	For research use only (RUO)
<b>Quality Control Testing</b>	Standard curve The standard curve is for the purpose of illustration only and should not be used to calculate unknowns. A standard curve should be generated each time the assay is performed.
<b>Storage Instruction</b>	Store at 4°C for 6 months, at -20°C for 12 months. Avoid multiple freeze-thaw cycles.

## Applications

- Quantification

## Gene Info — KLK12

Entrez GeneID	<a href="#">43849</a>
Gene Name	KLK12
Gene Alias	DKFZp686H1078, KLK-L5, KLKL5, MGC42603
Gene Description	kallikrein-related peptidase 12
Omim ID	<a href="#">605539</a>
Gene Ontology	<a href="#">Hyperlink</a>
Gene Summary	Kallikreins are a subgroup of serine proteases having diverse physiological functions. Growing evidence suggests that many kallikreins are implicated in carcinogenesis and some have potential as novel cancer and other disease biomarkers. This gene is one of the fifteen kallikrein subfamily members located in a cluster on chromosome 19. Alternate splicing of this gene results in three transcript variants encoding different isoforms. [provided by RefSeq]
Other Designations	kallikrein 12 kallikrein-like protein 5

## Disease

- [Carcinoma](#)
- [Genetic Predisposition to Disease](#)
- [Prostatic Neoplasms](#)
- [Stomach Neoplasms](#)