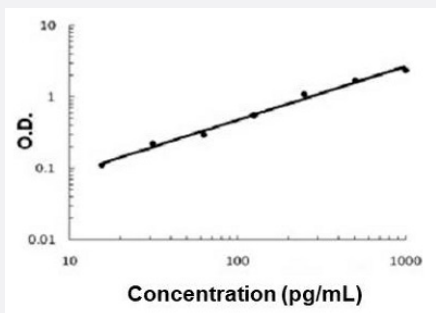


GZMA (Human) ELISA Kit

Catalog # KA5088

Size 1 Kit

Applications



The standard curve is for the purpose of illustration only and should not be used to calculate unknowns. A standard curve should be generated each time the assay is performed.

Specification

Product Description

GZMA (Human) ELISA Kit is a sandwich enzyme-linked immunosorbent assay for quantitative measurement of human Granzyme A in cell culture supernates, cell lysates, tissue homogenates, serum and plasma (heparin, EDTA).

Suitable Sample

Cell culture supernates, Cell lysates, Plasma, Serum, Tissue homogenates

Sample Volume

100 μ L

Label

HRP-conjugated

Detection Method

Colorimetric

Assay Type

Quantitative

Calibration Range

15.6 - 1000 pg/mL

Reactivity

Human

Regulatory Status

For research use only (RUO)

Quality Control Testing

Standard curve

The standard curve is for the purpose of illustration only and should not be used to calculate unknowns. A standard curve should be generated each time the assay is performed.

Storage Instruction

Store at 4°C for 6 months, at -20°C for 12 months. Avoid multiple freeze-thaw cycles.

Applications

- Quantification

Gene Info — GZMA

Entrez GeneID	3001
Gene Name	GZMA
Gene Alias	CTLA3, HFSP
Gene Description	granzyme A (granzyme 1, cytotoxic T-lymphocyte-associated serine esterase 3)
Omim ID	140050
Gene Ontology	Hyperlink
Gene Summary	Cytolytic T lymphocytes (CTL) and natural killer (NK) cells share the remarkable ability to recognize, bind, and lyse specific target cells. They are thought to protect their host by lysing cells bearing on their surface 'nonself' antigens, usually peptides or proteins resulting from infection by intracellular pathogens. The protein described here is a T cell- and natural killer cell-specific serine protease that may function as a common component necessary for lysis of target cells by cytotoxic T lymphocytes and natural killer cells. [provided by RefSeq]
Other Designations	CTL tryptase Granzyme A (Cytotoxic T-lymphocyte-associated serine esterase-3; Hanukah factor serine protease) granzyme A

Pathway

- [Neuroactive ligand-receptor interaction](#)

Disease

- [Asthma](#)
- [Bronchiolitis](#)
- [Genetic Predisposition to Disease](#)
- [Infant](#)

- [Respiratory Syncytial Virus Infections](#)