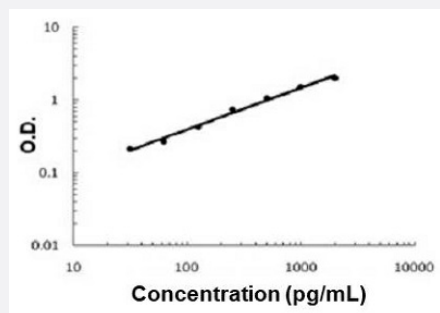


# S100a8 (Mouse) ELISA Kit

Catalog # KA5087      Size 1 Kit

## Applications



The standard curve is for the purpose of illustration only and should not be used to calculate unknowns. A standard curve should be generated each time the assay is performed.

## Specification

<b>Product Description</b>	S100a8 (Mouse) ELISA Kit is a sandwich enzyme-linked immunosorbent assay for quantitative measurement of mouse S100a8.
<b>Suitable Sample</b>	Cell culture supernates, Cell lysates, Plasma (heparin, EDTA), Serum
<b>Sample Volume</b>	100 uL
<b>Label</b>	HRP-conjugated
<b>Detection Method</b>	Colorimetric
<b>Assay Type</b>	Quantitative
<b>Calibration Range</b>	156 to 10000 pg/mL
<b>Reactivity</b>	Mouse
<b>Regulatory Status</b>	For research use only (RUO)
<b>Storage Instruction</b>	Store at 4°C for 6 months, at -20°C for 12 months. Avoid multiple freeze-thaw cycles.

## Applications

- Quantification

## Gene Info — S100a8

**Entrez GeneID** [20201](#)

**Gene Name** S100a8

**Gene Alias** 60B8Ag, AI323541, B8Ag, CFAG, CP-10, Caga, MRP8, p8

**Gene Description** S100 calcium binding protein A8 (calgranulin A)

**Gene Ontology** [Hyperlink](#)

**Other Designations** chemotactic S100 protein

## Publication Reference

- [Senescent immune cells accumulation promotes brown adipose tissue dysfunction during aging.](#)

Xu Feng, Liwen Wang, Ruoyu Zhou, Rui Zhou, Linyun Chen, Hui Peng, Yan Huang, Qi Guo, Xianghang Luo, Haiyan Zhou.  
Nature Communications 2023 Jun; 14(1):3208.

Application: ELISA, mouse, brown adipose tissue, serum