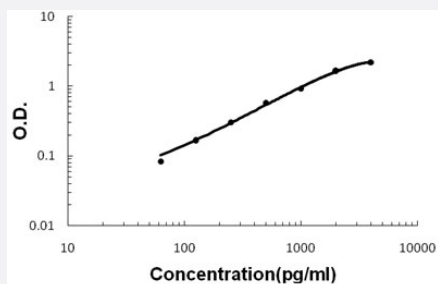


# Spint1 (Mouse) ELISA Kit

Catalog # KA5067      Size 1 Kit

## Applications



The standard curve is for the purpose of illustration only and should not be used to calculate unknowns. A standard curve should be generated each time the assay is performed.

## Specification

<b>Product Description</b>	Spint1 (Mouse) ELISA Kit is a sandwich enzyme-linked immunosorbent assay for quantitative detection of mouse Spint1 in cell culture supernates, serum and plasma (heparin).
<b>Suitable Sample</b>	Cell culture supernates, serum and plasma (heparin)
<b>Sample Volume</b>	100 $\mu$ L
<b>Label</b>	HRP-conjugated
<b>Detection Method</b>	Colorimetric
<b>Assay Type</b>	Quantitative
<b>Calibration Range</b>	62.5 to 4000 pg/mL
<b>Reactivity</b>	Mouse
<b>Regulatory Status</b>	For research use only (RUO)
<b>Quality Control Testing</b>	Standard curve The standard curve is for the purpose of illustration only and should not be used to calculate unknowns. A standard curve should be generated each time the assay is performed.
<b>Storage Instruction</b>	Store at 4°C for 6 months, at -20°C for 12 months. Avoid multiple freeze-thaw cycles.

## Applications

- Quantification

## Gene Info — Spint1

Entrez GeneID	<a href="#">20732</a>
Gene Name	Spint1
Gene Alias	HAI-1
Gene Description	serine protease inhibitor, Kunitz type 1
Gene Ontology	<a href="#">Hyperlink</a>
Gene Summary	O
Other Designations	Kunitz-type protease inhibitor 1 OTTMUSP00000016930 OTTMUSP00000016931 OTTMUSP0000016932 hepatocyte growth factor activator inhibitor type 1