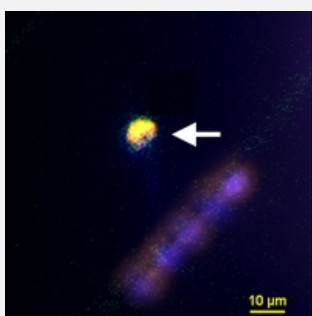


# CytoQuest™ Neuroblastoma CSV CSV CD45 GD2 Antibody Kit

Catalog # KA4962

Size 1 Kit

## Applications



### Immunofluorescence (Circulating Tumor Cell)

Representative images of circulating neuroblastoma cell (white arrow) from patient with neuroblastoma. Circulating neuroblastoma cells were detected by using immunofluorescence staining for CSV(FITC, green), CD45 (PE, orange), GD2 (APC, red) and Nucleus (Hoechst 33342, blue).

## Specification

### Product Description

CytoQuest™ Neuroblastoma CSV CSV CD45 GD2 Antibody Kit contains antibodies for immobilization and immunostaining of circulating neuroblastoma cells.

### Instrument Requirement

[CytoQuest™ CR](#)

### Chip Requirement

[CytoChipNano](#)

**Supplied Product**

Kit content:

1. Anti-CSV capturing antibody (Biotin):

Biotin conjugated Anti-CSV antibody for circulating neuroblastoma cell capturing.

2. Anti-CSV detecting antibody (FITC):

FITC conjugated Anti-CSV antibody for circulating neuroblastoma cell detection.

3. Anti-CD45 detecting antibody (PE):

PE conjugated Anti-CD45 antibody for circulating neuroblastoma cell detection.

4. Anti-GD2 detecting antibody:

Anti-GD2 antibody for circulating neuroblastoma cell detection.

5. Secondary antibody (APC)

6. 50X Antibody Dilution Buffer (50X ADB).

\*Reagents are sufficient for 20 assays using recommended protocol.

**Regulatory Status**

For research use only (RUO)

**Storage Instruction**

Store Anti-CSV capturing antibody (Biotin), Anti-CSV detecting antibody (FITC), Anti-CD45 detecting antibody (PE) and Secondary antibody (APC) at 4°C.

Store 50X Anti-GD2 detecting antibody and Antibody Dilution Buffer (50X ADB) at -20°C.

Aliquot to avoid repeated freezing and thawing.

**Note**

Cell-Surface Vimentin (CSV) detecting antibody is best used before cell fixation and permeabilization. If fixation is required, please use Abnova's [Special Fixative](#).

Cell-Surface Vimentin (CSV) antibody is a pending MD Anderson patent which has been exclusively licensed to Abnova Corporation.

## Applications

- Immunofluorescence (Circulating Tumor Cell)

Representative images of circulating neuroblastoma cell (white arrow) from patient with neuroblastoma. Circulating neuroblastoma cells were detected by using immunofluorescence staining for CSV (FITC, green), CD45 (PE, orange), GD2 (APC, red) and Nucleus (Hoechst 33342, blue).