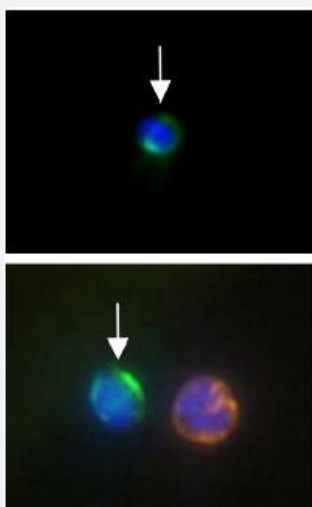


# CytoQuest™ Neuroblastoma CSV CSV CD45 Antibody Kit

Catalog # KA4911

Size

## Applications



### Immunofluorescence (Circulating Tumor Cell)

Representative images of CTC (upper image, white arrow) and DTCs (lower image, white arrow) on two separate CytoChipNano CR from neuroblastoma patient. CTCs and DTCs were detected by using immunofluorescence staining for CSV (FITC, green), CD45 (PE, orange) and Nucleus (Hoechst, blue).

## Specification

### Product Description

CytoQuest™ Neuroblastoma CSV CSV CD45 Antibody Kit contains antibodies and reagents for im mobilization and immunostaining of neuroblastoma circulating tumor cells (CTCs) in peripheral blood and disseminated tumor cells (DTCs) in bone marrow.

### Instrument Requirement

[CytoQuest™ CR](#)

### Chip Requirement

[CytoChipNano CR](#)

**Supplied Product**

Kit content:

1. Anti-CSV capturing antibody (Biotin):

Biotin conjugated Anti-CSV antibody for circulating neuroblastoma cell capturing.

2. Anti-CSV detecting antibody (FITC):

FITC conjugated Anti-CSV antibody for circulating neuroblastoma cell detection.

3. Anti-CD45 detecting antibody (PE):

PE conjugated Anti-CD45 antibody for circulating neuroblastoma cell detection.

4. 50X Antibody Dilution Buffer (50X ADB).

\*Reagents are sufficient for 20 assays using recommended protocol.

**Regulatory Status**

For research use only (RUO)

**Storage Instruction**

Store Anti-CSV capturing antibody (Biotin), Anti-CSV detecting antibody (FITC) and Anti-CD45 detecting antibody (PE) at 4°C.

Store 50X Antibody Dilution Buffer (50X ADB) at -20°C.

Aliquot to avoid repeated freezing and thawing.

**Note**

Cell-Surface Vimentin (CSV) detecting antibody is best used before cell fixation and permeabilization. If fixation is required, please use Abnova's [Special Fixative](#).

Cell-Surface Vimentin (CSV) antibody is a pending MD Anderson patent which has been exclusively licensed to Abnova Corporation.

## Applications

- Immunofluorescence (Circulating Tumor Cell)

Representative images of CTC (upper image, white arrow) and DTCs (lower image, white arrow) on two separate CytoChipNano CR from neuroblastoma patient. CTCs and DTCs were detected by using immunofluorescence staining for CSV (FITC, green), CD45 (PE, orange) and Nucleus (Hoechst, blue).