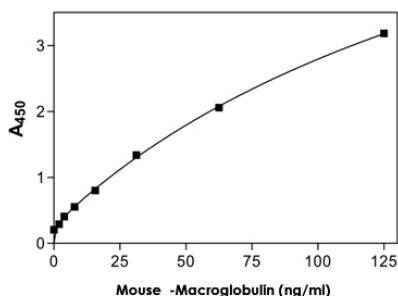


Alpha-Macroglobulin (Mouse) ELISA Kit

Catalog # KA4820

Size 1 Kit

Applications



The standard curve is for the purpose of illustration only and should not be used to calculate unknowns. A standard curve should be generated each time the assay is performed.

Specification

Product Description	Alpha-Macroglobulin (Mouse) ELISA Kit is for the quantitative measurement of alpha-macroglobulin in plasma and serum.
Suitable Sample	Plasma, Serum
Sample Volume	100 μ L
Label	HRP-conjugated
Detection Method	Colorimetric
Assay Type	Quantitative
Calibration Range	3.9 to 125 ng/mL
Reactivity	Mouse
Regulation Status	For research use only (RUO)
Quality Control Testing	Standard curve The standard curve is for the purpose of illustration only and should not be used to calculate unknowns. A standard curve should be generated each time the assay is performed.
Storage Instruction	Store the kit at 4°C.

Applications

- Quantification