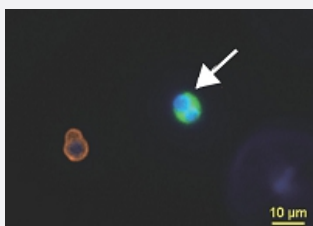


CytoQuest™ EpCAM PanCK CD45 CSV EMT Antibody Kit

Catalog # KA4817

Size 1 Kit

Applications



Immunofluorescence (Circulating Tumor Cell)

Representative images of EMT transformed CTCs (white arrow) and WBC from pancreatic cancer patient. CSV EMT CTCs were detected by using immunofluorescence staining for CSV (FITC, green), CD45 (PE, orange) and Nucleus (DAPI, blue).

Specification

Product Description

CytoQuest™ EpCAM PanCK CD45 CSV EMT Antibody Kit contains antibodies for immobilization and immunostaining of EMT transformed circulating epithelial cells.

Instrument Requirement

[CytoQuest™ CR](#)

Chip Requirement

[CytoChipNano](#)

Supplied Product

Kit content:

1. Anti-EpCAM capturing antibody (Biotin):
Biotin conjugated Anti-EpCAM antibody for EMT transformed circulating epithelial cell capturing.
2. Anti-PanCK detecting antibody (FITC):
FITC conjugated Anti-PanCK antibody for EMT transformed circulating epithelial cell detection.
3. Anti-CSV detecting antibody (APC):
APC conjugated Anti-CSV antibody for EMT transformed circulating epithelial cell detection.
4. Anti-CD45 detecting antibody (PE):
PE conjugated Anti-CD45 antibody for EMT transformed circulating epithelial cell detection.
5. 50X Antibody Dilution Buffer (50X ADB).

*Reagents are sufficient for 20 assays using recommended protocol.

Regulatory Status

For research use only (RUO)

Storage Instruction

Store Anti-EpCAM capturing antibody (Biotin), Anti-PanCK detecting antibody (FITC), Anti-CSV detecting antibody (APC) and Anti-CD45 detecting antibody (PE) at 4°C.

Store 50X Antibody Dilution Buffer (50X ADB) at -20°C.

Aliquot to avoid repeated freezing and thawing.

Note

Cell-Surface Vimentin (CSV) detecting antibody is best used before cell fixation and permeabilization. If fixation is required, please use Abnova's [Special Fixative](#).

Cell-Surface Vimentin (CSV) antibody is a pending MD Anderson patent which has been exclusively licensed to Abnova Corporation.

Applications

- Immunofluorescence (Circulating Tumor Cell)

Representative images of EMT transformed CTCs (white arrow) and WBC from pancreatic cancer patient. CSV EMT CTCs were detected by using immunofluorescence staining for CSV (FITC, green), CD45 (PE, orange) and Nucleus (DAPI, blue).