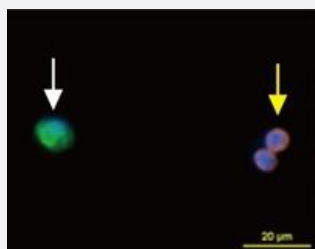


# CytoQuest™ Prostate Cancer PSMA PanCK CD45 Antibody Kit

Catalog # KA4574

Size 1 Kit

## Applications



### Immunofluorescence (Circulating Prostate Cancer Cell)

Representative images of prostate cancer cell (white arrow) and WBC (yellow arrow) from patient with castration-resistant prostate cancer. Prostate cancer cells were detected by using immunofluorescence staining for PanCK (FITC, green), CD45 (PE, orange) and Nucleus (DAPI, blue).

## Specification

<b>Product Description</b>	CytoQuest™ Prostate Cancer PSMA PanCK CD45 Antibody Kit contains antibodies for immobilization and immunostaining of circulating prostate cancer cells.
<b>Instrument Requirement</b>	<a href="#">CytoQuest™ CR</a>
<b>Chip Requirement</b>	<a href="#">CytoChipNano</a>
<b>Supplied Product</b>	<p>Kit content:</p> <ol style="list-style-type: none"> <li>1. Anti-PSMA capturing antibody (Biotin): Biotin conjugated Anti-PSMA antibody for prostate cancer cell capturing.</li> <li>2. Anti-PanCK detecting antibody (FITC): FITC conjugated Anti-PanCK antibody for prostate cancer cell detection.</li> <li>3. Anti-CD45 detecting antibody (PE): PE conjugated Anti-CD45 antibody for prostate cancer cell detection.</li> <li>4. 50X Antibody Dilution Buffer (50X ADB)</li> </ol> <p>*Reagents are sufficient for 20 assays using recommended protocol.</p>
<b>Regulatory Status</b>	For research use only (RUO)

**Storage Instruction**

Store Anti-PSMA capturing antibody (Biotin), Anti-PanCK detecting antibody (FITC) and Anti-CD45 detecting antibody (PE) at 4°C.

Store 50X Antibody Dilution Buffer (50X ADB) at -20°C.

Aliquot to avoid repeated freezing and thawing.

## Applications

- Immunofluorescence (Circulating Prostate Cancer Cell)

Representative images of prostate cancer cell (white arrow) and WBC (yellow arrow) from patient with castration-resistant prostate cancer. Prostate cancer cells were detected by using immunofluorescence staining for PanCK (FITC, green), CD45 (PE, orange) and Nucleus (DAPI, blue).