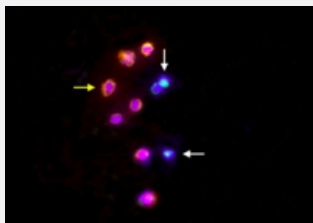


CytoQuest™ Choriocarcinoma HLA-G PanCK CD45 Antibody Kit

Catalog # KA4530

Size 1 Kit

Applications



Immunofluorescence (Circulating Choriocarcinoma Cell)

Representative images of choriocarcinoma cell (white arrow) and WBC (yellow arrow) from patient with choriocarcinoma. Choriocarcinoma cells were detected by using immunofluorescence staining for PanCK (FITC, green), CD45 (PE, orange) and Nucleus (DAPI, blue).

Specification

Product Description

CytoQuest™ Choriocarcinoma HLA-G PanCK CD45 Antibody Kit contains antibodies for immobilization and immunostaining of circulating choriocarcinoma cells.

Instrument Requirement

[CytoQuest™ CR](#)

Chip Requirement

[CytoChipNano](#)

Supplied Product

Kit content:

1. Anti-HLA-G capturing antibody (Biotin):
Biotin conjugated Anti-HLA-G antibody for circulating choriocarcinoma cell capturing.
2. Anti-PanCK detecting antibody (FITC):
FITC conjugated Anti-PanCK antibody for circulating choriocarcinoma cell detection.
3. Anti-CD45 detecting antibody (PE):
PE conjugated Anti-CD45 antibody for circulating choriocarcinoma cell detection.
4. 50X Antibody Dilution Buffer (50X ADB)

*Reagents are sufficient for 20 assays using recommended protocol.

Regulatory Status

For research use only (RUO)

Storage Instruction

Store Anti-HLA-G capturing antibody (Biotin), Anti-PanCK detecting antibody (FITC) and Anti-CD45 detecting antibody (PE) at 4°C.

Store 50X Antibody Dilution Buffer (50X ADB) at -20°C.

Aliquot to avoid repeated freezing and thawing.

Applications

- Immunofluorescence (Circulating Choriocarcinoma Cell)

Representative images of choriocarcinoma cell (white arrow) and WBC (yellow arrow) from patient with choriocarcinoma. Choriocarcinoma cells were detected by using immunofluorescence staining for PanCK (FITC, green), CD45 (PE, orange) and Nucleus (DAPI, blue).