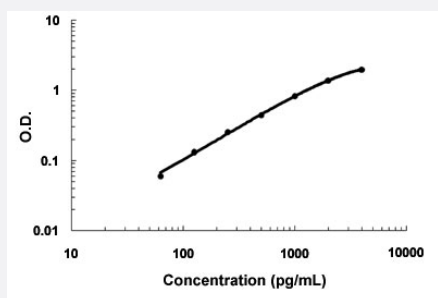


SDC4 (Human) ELISA Kit

Catalog # KA4492 Size 1 Kit

Applications



The standard curve is for the purpose of demonstration only and should not be used to calculate unknowns. A standard curve should be generated each time the assay is performed.

Specification

Product Description	SDC4 (Human) ELISA Kit is a sandwich enzyme immunoassay for the quantitative measurement of human SDC4.
Suitable Sample	Cell culture supernates, Serum
Sample Volume	100 μ L
Label	HRP-conjugated
Detection Method	Colorimetric
Assay Type	Quantitative
Calibration Range	62.5 to 4000 pg/mL
Reactivity	Human
Regulation Status	For research use only (RUO)
Quality Control Testing	Standard curve The standard curve is for the purpose of demonstration only and should not be used to calculate unknowns. A standard curve should be generated each time the assay is performed.
Storage Instruction	Store at 4°C for 6 months, at -20°C for 12 months. Avoid multiple freeze-thaw cycles.

Applications

- Quantification

Gene Info — SDC4

Entrez GeneID	6385
Gene Name	SDC4
Gene Alias	MGC22217, SYND4
Gene Description	syndecan 4
Omim ID	600017
Gene Ontology	Hyperlink
Gene Summary	The protein encoded by this gene is a transmembrane (type I) heparan sulfate proteoglycan that functions as a receptor in intracellular signaling. The encoded protein is found as a homodimer and is a member of the syndecan proteoglycan family. This gene is found on chromosome 20, while a pseudogene has been found on chromosome 22. [provided by RefSeq]
Other Designations	OTTHUMP00000031788 amphiglycan ryudocan amphiglycan ryudocan core protein syndecan 4 (amphiglycan, ryudocan) syndecan proteoglycan 4

Pathway

- [Cell adhesion molecules \(CAMs\)](#)
- [ECM-receptor interaction](#)

Disease

- [Cardiovascular Diseases](#)
- [Coronary Artery Disease](#)
- [Diabetes Mellitus](#)
- [Edema](#)
- [Genetic Predisposition to Disease](#)

- [Varicose Ulcer](#)