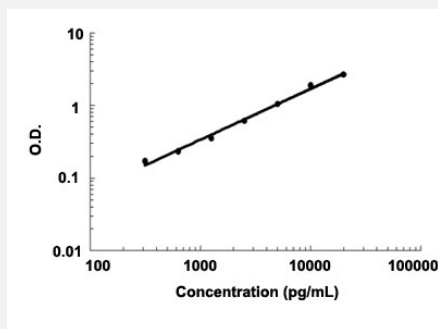


Mbl2 (Mouse) ELISA Kit

Catalog # KA4482 Size 1 Kit

Applications



EK0806

The standard curve is for the purpose of demonstration only and should not be used to calculate unknowns. A standard curve should be generated each time the assay is performed.

Specification

Product Description	Mbl2 (Mouse) ELISA Kit is a sandwich enzyme immunoassay for the quantitative measurement of mouse Mbl2.
Suitable Sample	Cell culture supernates, Plasma (heparin, EDTA), Serum
Sample Volume	100 μ L
Label	HRP-conjugated
Detection Method	Colorimetric
Assay Type	Quantitative
Calibration Range	312 to 20000 pg/mL
Reactivity	Mouse
Regulation Status	For research use only (RUO)
Quality Control Testing	Standard curve EK0806 The standard curve is for the purpose of demonstration only and should not be used to calculate unknowns. A standard curve should be generated each time the assay is performed.
Storage Instruction	Store at 4°C for 6 months, at -20°C for 12 months. Avoid multiple freeze-thaw cycles.

Applications

- Quantification

Gene Info — Mbl2

Entrez GeneID	17195
---------------	-----------------------

Gene Name	Mbl2
-----------	------

Gene Alias	L-MBP, MBL, MBL-C, MBP-C
------------	--------------------------

Gene Description	mannose-binding lectin (protein C) 2
------------------	--------------------------------------

Gene Ontology	Hyperlink
---------------	---------------------------

Gene Summary	liver (C)
--------------	-----------

Other Designations	mannose binding lectin (C) mannose binding lectin, liver (C)
--------------------	--