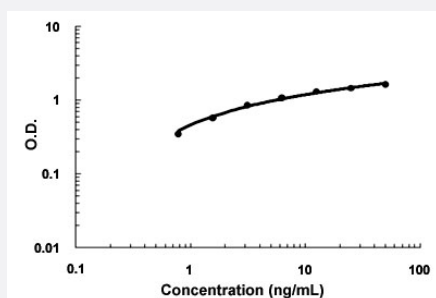


# RARRES2 (Human) ELISA Kit

Catalog # KA4460

Size 1 Kit

## Applications



The standard curve is for the purpose of demonstration only and should not be used to calculate unknowns. A standard curve should be generated each time the assay is performed.

## Specification

<b>Product Description</b>	RARRES2 (Human) ELISA Kit is a sandwich enzyme immunoassay for the quantitative measurement of human RARRES2.
<b>Suitable Sample</b>	Cell culture supernates, Plasma (heparin, EDTA), Serum
<b>Sample Volume</b>	100 $\mu$ L
<b>Label</b>	HRP-conjugated
<b>Detection Method</b>	Colorimetric
<b>Assay Type</b>	Quantitative
<b>Calibration Range</b>	0.78 to 50 ng/mL
<b>Reactivity</b>	Human
<b>Regulation Status</b>	For research use only (RUO)
<b>Quality Control Testing</b>	Standard curve The standard curve is for the purpose of demonstration only and should not be used to calculate unknowns. A standard curve should be generated each time the assay is performed.
<b>Storage Instruction</b>	Store at 4°C for 6 months, at -20°C for 12 months. Avoid multiple freeze-thaw cycles.

## Applications

- Quantification

## Gene Info — RARRES2

Entrez GeneID	<a href="#">5919</a>
Gene Name	RARRES2
Gene Alias	CHEMERIN, HP10433, TIG2
Gene Description	retinoic acid receptor responder (tazarotene induced) 2
Omim ID	<a href="#">601973</a>
Gene Ontology	<a href="#">Hyperlink</a>
Gene Summary	This gene encodes a secreted chemotactic protein that initiates chemotaxis via the ChemR23 G protein-coupled seven-transmembrane domain ligand. Expression of this gene is upregulated by the synthetic retinoid tazarotene and occurs in a wide variety of tissues. The active protein has several roles, including that as an adipokine, and is truncated on both termini from the proprotein. [provided by RefSeq]
Other Designations	-

## Disease

- [Arthritis](#)
- [Crohn Disease](#)
- [Diabetes Mellitus](#)
- [Genetic Predisposition to Disease](#)
- [Obesity](#)