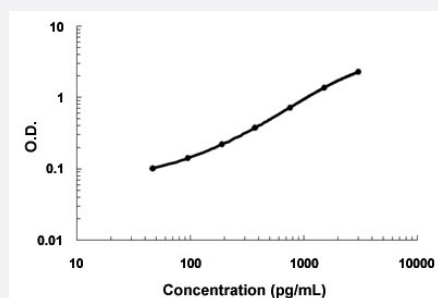


# SPARCL1 (Human) ELISA Kit

Catalog # KA4455      Size 1 Kit

## Applications



The standard curve is for the purpose of demonstration only and should not be used to calculate unknowns. A standard curve should be generated each time the assay is performed.

## Specification

<b>Product Description</b>	SPARCL1 (Human) ELISA Kit is a sandwich enzyme immunoassay for the quantitative measurement of human SPARCL1.
<b>Suitable Sample</b>	Cell culture supernates, Serum
<b>Sample Volume</b>	100 $\mu$ L
<b>Label</b>	HRP-conjugated
<b>Detection Method</b>	Colorimetric
<b>Assay Type</b>	Quantitative
<b>Calibration Range</b>	46.9 to 3000 pg/mL
<b>Reactivity</b>	Human
<b>Regulation Status</b>	For research use only (RUO)
<b>Quality Control Testing</b>	Standard curve The standard curve is for the purpose of demonstration only and should not be used to calculate unknowns. A standard curve should be generated each time the assay is performed.
<b>Storage Instruction</b>	Store at 4°C for 6 months, at -20°C for 12 months. Avoid multiple freeze-thaw cycles.

## Applications

- Quantification

## Gene Info — SPARCL1

Entrez GeneID	<a href="#">8404</a>
Gene Name	SPARCL1
Gene Alias	PIG33, SC1
Gene Description	SPARC-like 1 (hevin)
Omim ID	<a href="#">606041</a>
Gene Ontology	<a href="#">Hyperlink</a>
Gene Summary	hevin) hevin mast9 proliferation-inducing protein 33
Other Designations	SPARC-like 1 SPARC-like 1 (mast9, hevin) hevin mast9 proliferation-inducing protein 33

## Disease

- [Genetic Predisposition to Disease](#)
- [Kidney Failure](#)
- [Multiple Sclerosis](#)
- [Schizophrenia](#)