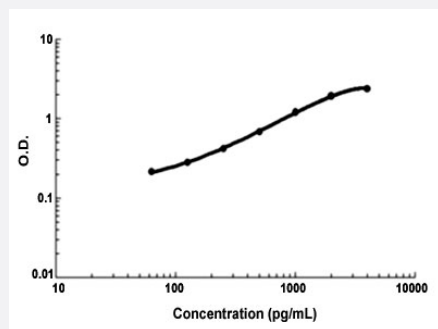


NID1 (Human) ELISA Kit

Catalog # KA4396 Size 1 Kit

Applications



The standard curve is for the purpose of demonstration only and should not be used to calculate unknowns. A standard curve should be generated each time the assay is performed.

Specification

Product Description	NID1 (Human) ELISA Kit is a sandwich enzyme immunoassay for the quantitative measurement of human NID1.
Suitable Sample	Cell culture supernatants, Serum.
Sample Volume	100 μ L
Label	HRP-conjugated
Detection Method	Colorimetric
Assay Type	Quantitative
Calibration Range	62.5 to 4000 pg/mL
Reactivity	Human
Regulation Status	For research use only (RUO)
Storage Instruction	Store at 4°C for 6 months, at -20°C for 12 months. Avoid multiple freeze-thaw cycles.

Applications

- Quantification

Gene Info — NID1

Entrez GeneID	4811
Gene Name	NID1
Gene Alias	NID
Gene Description	nidogen 1
Omim ID	131390
Gene Ontology	Hyperlink
Gene Summary	This gene encodes a member of the nidogen family of basement membrane glycoproteins. The protein interacts with several other components of basement membranes, and may play a role in cell interactions with the extracellular matrix. [provided by RefSeq]
Other Designations	OTTHUMP00000037970 enactin entactin