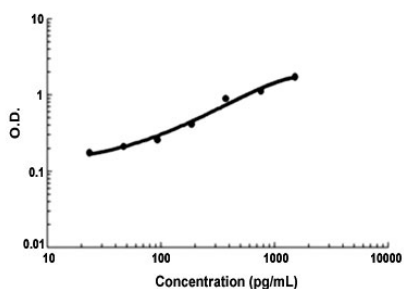


Esm1 (Mouse) ELISA Kit

Catalog # KA4393 Size 1 Kit

Applications



The standard curve is for the purpose of demonstration only and should not be used to calculate unknowns. A standard curve should be generated each time the assay is performed.

Specification

Product Description	Esm1 (Mouse) ELISA Kit is a sandwich enzyme immunoassay for the quantitative measurement of mouse Esm1.
Suitable Sample	Cell culture supernates, Plasma (heparin, EDTA), Serum
Sample Volume	100 μ L
Label	HRP-conjugated
Detection Method	Colorimetric
Assay Type	Quantitative
Calibration Range	23.4 to 1500 pg/mL
Reactivity	Mouse
Regulation Status	For research use only (RUO)
Quality Control Testing	Standard curve The standard curve is for the purpose of demonstration only and should not be used to calculate unknowns. A standard curve should be generated each time the assay is performed.
Storage Instruction	Store at 4°C for 6 months, at -20°C for 12 months. Avoid multiple freeze-thaw cycles.

Applications

- Quantification

Gene Info — Esm1

Entrez GeneID	71690
---------------	-----------------------

Gene Name	Esm1
-----------	------

Gene Alias	0610042H23Rik, AV004503, ESM-1
------------	--------------------------------

Gene Description	endothelial cell-specific molecule 1
------------------	--------------------------------------

Gene Ontology	Hyperlink
---------------	---------------------------

Other Designations	-
--------------------	---