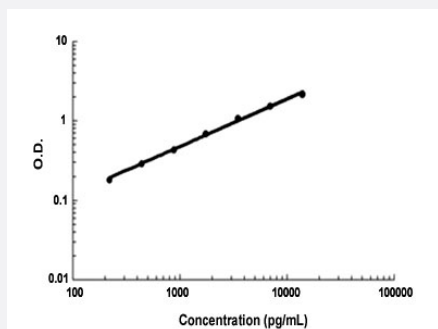


Cd36 (Rat) ELISA Kit

Catalog # KA4320 Size 1 Kit

Applications



The standard curve is for the purpose of demonstration only and should not be used to calculate unknowns. A standard curve should be generated each time the assay is performed.

Specification

Product Description	Cd36 (Rat) ELISA Kit is a sandwich enzyme immunoassay for the quantitative measurement of rat Cd36.
Suitable Sample	Cell culture supernates, Cell lysates, Tissue homogenates, Plasma (heparin, EDTA), Serum
Sample Volume	100 uL
Label	HRP-conjugated
Detection Method	Colorimetric
Assay Type	Quantitative
Calibration Range	156 to 10,000 pg/mL
Reactivity	Rat
Regulation Status	For research use only (RUO)
Storage Instruction	Store at 4°C for 6 months, at -20°C for 12 months. Avoid multiple freeze-thaw cycles.

Applications

- Quantification

Gene Info — Cd36

Entrez GeneID	29184
Gene Name	Cd36
Gene Alias	Fat, MGC108510, MGC91634
Gene Description	CD36 molecule (thrombospondin receptor)
Gene Ontology	Hyperlink
Gene Summary	thrombospondin receptor) Cd36 antigen collagen type I receptor thrombospondin receptor fatty acid translocase
Other Designations	CD36 antigen (collagen type I receptor, thrombospondin receptor) Cd36 antigen collagen type I receptor thrombospondin receptor fatty acid translocase