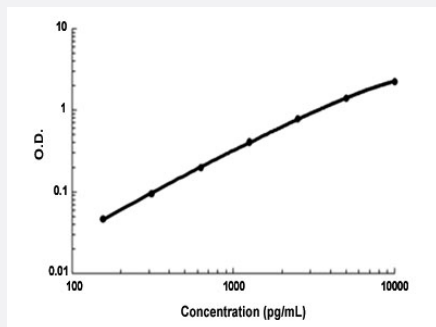


Dmp1 (Mouse) ELISA Kit

Catalog # KA4313 Size 1 Kit

Applications



The standard curve is for the purpose of demonstration only and should not be used to calculate unknowns. A standard curve should be generated each time the assay is performed.

Specification

Product Description	Dmp1 (Mouse) ELISA Kit is a sandwich enzyme immunoassay for the quantitative measurement of mouse Dmp1.
Suitable Sample	Cell culture supernates, Plasma (heparin, EDTA), Serum, Tissue homogenates
Sample Volume	100 uL
Label	HRP-conjugated
Detection Method	Colorimetric
Assay Type	Quantitative
Calibration Range	156 to 10,000 pg/mL
Reactivity	Mouse
Regulation Status	For research use only (RUO)
Quality Control Testing	Standard curve The standard curve is for the purpose of demonstration only and should not be used to calculate unknowns. A standard curve should be generated each time the assay is performed.
Storage Instruction	Store at 4°C for 6 months, at -20°C for 12 months. Avoid multiple freeze-thaw cycles.

Applications

- Quantification

Gene Info — Dmp1

Entrez GeneID	13406
---------------	-----------------------

Gene Name	Dmp1
-----------	------

Gene Alias	AV020965, Dmp, MGC130441, PP
------------	------------------------------

Gene Description	dentin matrix protein 1
------------------	-------------------------

Gene Ontology	Hyperlink
---------------	---------------------------

Other Designations	serine rich acidic phosphoprotein
--------------------	-----------------------------------