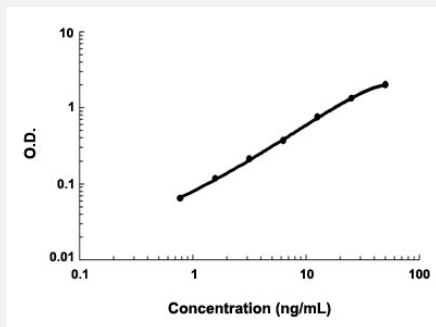


Prss8 (Mouse) ELISA Kit

Catalog # KA4301 Size 1 Kit

Applications



The standard curve is for the purpose of demonstration only and should not be used to calculate unknowns. A standard curve should be generated each time the assay is performed.

Specification

Product Description	Prss8 (Mouse) ELISA Kit is a sandwich enzyme immunoassay for the quantitative measurement of mouse Prss8.
Suitable Sample	Cell culture supernates, Plasma (EDTA, heparin), Serum and Urine
Sample Volume	100 μ L
Label	HRP-conjugated
Detection Method	Colorimetric
Assay Type	Quantitative
Calibration Range	0.78 to 50 ng/mL
Reactivity	Mouse
Regulation Status	For research use only (RUO)
Quality Control Testing	Standard curve The standard curve is for the purpose of demonstration only and should not be used to calculate unknowns. A standard curve should be generated each time the assay is performed.
Storage Instruction	Store at 4°C for 6 months, at -20°C for 12 months. Avoid multiple freeze-thaw cycles.

Applications

- Quantification

Gene Info — Prss8

Entrez GeneID	76560
Gene Name	Prss8
Gene Alias	2410039E18Rik, AI313909, C79772, CAP1, mCAP1
Gene Description	protease, serine, 8 (prostasin)
Gene Ontology	Hyperlink
Gene Summary	serine
Other Designations	channel activating protease 1 prostasin