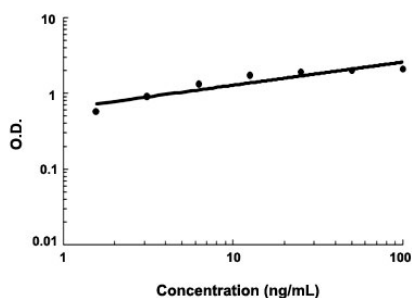


# PRSS8 (Human) ELISA Kit

Catalog # KA4300      Size 1 Kit

## Applications



The standard curve is for the purpose of demonstration only and should not be used to calculate unknowns. A standard curve should be generated each time the assay is performed.

## Specification

<b>Product Description</b>	PRSS8 (Human) ELISA Kit is a sandwich enzyme immunoassay for the quantitative measurement of human PRSS8.
<b>Suitable Sample</b>	Cell culture supernates, Plasma (EDTA, heparin), Serum and Urine
<b>Sample Volume</b>	100 uL
<b>Label</b>	HRP-conjugated
<b>Detection Method</b>	Colorimetric
<b>Assay Type</b>	Quantitative
<b>Calibration Range</b>	1.56 to 100 ng/mL
<b>Reactivity</b>	Human
<b>Regulation Status</b>	For research use only (RUO)
<b>Quality Control Testing</b>	Standard curve The standard curve is for the purpose of demonstration only and should not be used to calculate unknowns. A standard curve should be generated each time the assay is performed.
<b>Storage Instruction</b>	Store at 4°C for 6 months, at -20°C for 12 months. Avoid multiple freeze-thaw cycles.

## Applications

- Quantification

## Gene Info — PRSS8

**Entrez GeneID** [5652](#)

**Gene Name** PRSS8

**Gene Alias** CAP1, PROSTASIN

**Gene Description** protease, serine, 8

**Omim ID** [600823](#)

**Gene Ontology** [Hyperlink](#)

**Gene Summary** This gene encodes a trypsinogen, which is a member of the trypsin family of serine proteases. This enzyme is highly expressed in prostate epithelia and is one of several proteolytic enzymes found in seminal fluid. The proprotein is cleaved to produce a light chain and a heavy chain which are associated by a disulfide bond. It is active on peptide linkages involving the carboxyl group of lysine or arginine. [provided by RefSeq]

**Other Designations** channel-activating protease 1|prostasin

## Disease

- [Hypertension](#)