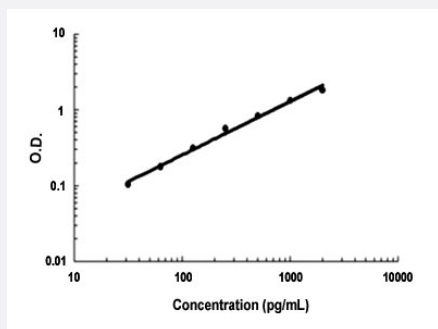


# Cd200 (Mouse) ELISA Kit

Catalog # KA4290      Size 1 Kit

## Applications



The standard curve is for the purpose of demonstration only and should not be used to calculate unknowns. A standard curve should be generated each time the assay is performed.

## Specification

<b>Product Description</b>	Cd200 (Mouse) ELISA Kit is a sandwich enzyme immunoassay for the quantitative measurement of mouse Cd200.
<b>Suitable Sample</b>	Cell Culture Supernates, Cell Lysates, Plasma (heparin, EDTA), Serum
<b>Sample Volume</b>	100 uL
<b>Label</b>	HRP-conjugated
<b>Detection Method</b>	Colorimetric
<b>Assay Type</b>	Quantitative
<b>Calibration Range</b>	31.2 to 2000 pg/mL
<b>Reactivity</b>	Mouse
<b>Regulation Status</b>	For research use only (RUO)
<b>Storage Instruction</b>	Store at 4°C for 6 months, at -20°C for 12 months. Avoid multiple freeze-thaw cycles.

## Applications

- Quantification

## Gene Info — Cd200

Entrez GeneID	<a href="#">17470</a>
---------------	-----------------------

Gene Name	Cd200
-----------	-------

Gene Alias	Mox2, OX2
------------	-----------

Gene Description	CD200 antigen
------------------	---------------

Gene Ontology	<a href="#">Hyperlink</a>
---------------	---------------------------

Other Designations	Cd200 antigen MRC OX-2 antigen identified by monoclonal antibody MRC OX-2
--------------------	---