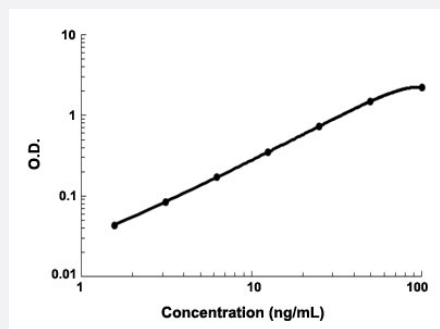


# Apcs (Mouse) ELISA Kit

Catalog # KA4258      Size 1 Kit

## Applications



The standard curve is for the purpose of demonstration only and should not be used to calculate unknowns. A standard curve should be generated each time the assay is performed.

## Specification

<b>Product Description</b>	Apcs (Mouse) ELISA Kit is a sandwich enzyme immunoassay for the quantitative measurement of mouse Apcs.
<b>Suitable Sample</b>	Cell culture supernates, Plasma (EDTA, heparin) and Serum
<b>Sample Volume</b>	100 $\mu$ L
<b>Label</b>	HRP-conjugated
<b>Detection Method</b>	Colorimetric
<b>Assay Type</b>	Quantitative
<b>Calibration Range</b>	1.56 to 100 ng/mL
<b>Reactivity</b>	Mouse
<b>Regulation Status</b>	For research use only (RUO)
<b>Quality Control Testing</b>	Standard curve The standard curve is for the purpose of demonstration only and should not be used to calculate unknowns. A standard curve should be generated each time the assay is performed.
<b>Storage Instruction</b>	Store at 4°C for 6 months, at -20°C for 12 months. Avoid multiple freeze-thaw cycles.

## Applications

- Quantification

## Gene Info — Apcs

Entrez GeneID	<a href="#">20219</a>
---------------	-----------------------

Gene Name	Apcs
-----------	------

Gene Alias	Sap
------------	-----

Gene Description	serum amyloid P-component
------------------	---------------------------

Gene Ontology	<a href="#">Hyperlink</a>
---------------	---------------------------

Other Designations	-
--------------------	---