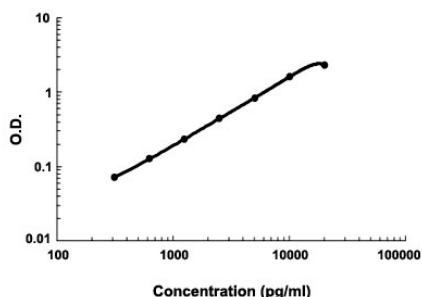


ICAM2 (Human) ELISA Kit

Catalog # KA4225 Size 1 Kit

Applications



The standard curve is for the purpose of demonstration only and should not be used to calculate unknowns. A standard curve should be generated each time the assay is performed.

Specification

Product Description	ICAM2 (Human) ELISA Kit is a sandwich enzyme immunoassay for the quantitative measurement of human ICAM2.
Suitable Sample	Cell culture supernates, Plasma (heparin, EDTA), Serum, Tissue homogenates
Sample Volume	100 uL
Label	HRP-conjugated
Detection Method	Colorimetric
Assay Type	Quantitative
Calibration Range	312 to 20,000 pg/mL
Reactivity	Human
Regulation Status	For research use only (RUO)
Quality Control Testing	Standard curve The standard curve is for the purpose of demonstration only and should not be used to calculate unknowns. A standard curve should be generated each time the assay is performed.
Storage Instruction	Store at 4°C for 6 months, at -20°C for 12 months. Avoid multiple freeze-thaw cycles.

Applications

- Quantification

Gene Info — ICAM2

Entrez GeneID [3384](#)

Gene Name ICAM2

Gene Alias CD102

Gene Description intercellular adhesion molecule 2

Omim ID [146630](#)

Gene Ontology [Hyperlink](#)

Gene Summary

The protein encoded by this gene is a member of the intercellular adhesion molecule (ICAM) family. All ICAM proteins are type I transmembrane glycoproteins, contain 2-9 immunoglobulin-like C2-type domains, and bind to the leukocyte adhesion LFA-1 protein. This protein may play a role in lymphocyte recirculation by blocking LFA-1-dependent cell adhesion. It mediates adhesive interactions important for antigen-specific immune response, NK-cell mediated clearance, lymphocyte recirculation, and other cellular interactions important for immune response and surveillance. Several transcript variants encoding the same protein have been found for this gene. [provided by RefSeq]

Other Designations -

Pathway

- [Cell adhesion molecules \(CAMs\)](#)
- [Natural killer cell mediated cytotoxicity](#)

Disease

- [Birth Weight](#)
- [Genetic Predisposition to Disease](#)
- [Glioblastoma](#)
- [Glioma](#)

- [Leukemia](#)
- [Meningeal Neoplasms](#)
- [Meningioma](#)