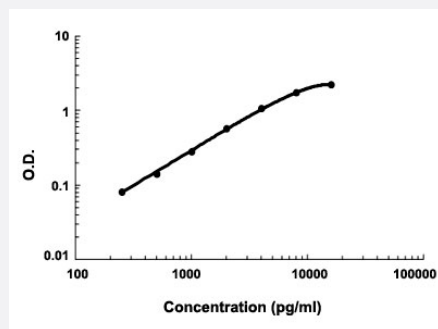


IL17RC (Human) ELISA Kit

Catalog # KA4215 Size 1 Kit

Applications



The standard curve is for the purpose of demonstration only and should not be used to calculate unknowns. A standard curve should be generated each time the assay is performed.

Specification

Product Description	IL17RC (Human) ELISA Kit is a sandwich enzyme immunoassay for the quantitative measurement of human IL17RC.
Suitable Sample	Cell culture supernates, Plasma (heparin, EDTA), Serum
Sample Volume	100 μ L
Label	HRP-conjugated
Detection Method	Colorimetric
Assay Type	Quantitative
Calibration Range	250 to 16,000 pg/mL
Reactivity	Human
Regulation Status	For research use only (RUO)
Quality Control Testing	Standard curve The standard curve is for the purpose of demonstration only and should not be used to calculate unknowns. A standard curve should be generated each time the assay is performed.
Storage Instruction	Store at 4°C for 6 months, at -20°C for 12 months. Avoid multiple freeze-thaw cycles.

Applications

- Quantification

Gene Info — IL17RC

Entrez GeneID	84818
Gene Name	IL17RC
Gene Alias	FLJ95963, FLJ96005, IL17-RL, IL17RL, MGC10763
Gene Description	interleukin 17 receptor C
Omim ID	610925
Gene Ontology	Hyperlink
Gene Summary	This gene encodes a single-pass transmembrane protein that shares limited similarity with the interleukin-17 receptor. Multiple alternatively spliced transcript variants encoding different isoforms have been detected for this gene, but the full-length nature of only three have been determined to date. [provided by RefSeq]
Other Designations	IL17F receptor interleukin 17 receptor-like