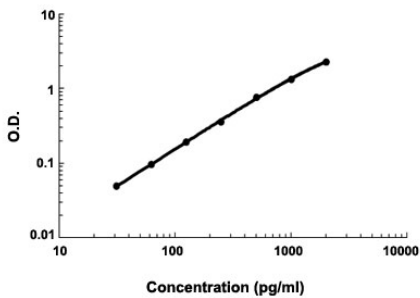


DIABLO (Human) ELISA Kit

Catalog # KA4211 Size 1 Kit

Applications



The standard curve is for the purpose of demonstration only and should not be used to calculate unknowns. A standard curve should be generated each time the assay is performed.

Specification

Product Description	DIABLO (Human) ELISA Kit is a sandwich enzyme immunoassay for the quantitative measurement of human DIABLO.
Suitable Sample	Cell culture supernates, Plasma (heparin, EDTA), Serum
Sample Volume	100 μ L
Label	HRP-conjugated
Detection Method	Colorimetric
Assay Type	Quantitative
Calibration Range	31.2 to 2000 pg/mL
Reactivity	Human
Regulation Status	For research use only (RUO)
Quality Control Testing	Standard curve The standard curve is for the purpose of demonstration only and should not be used to calculate unknowns. A standard curve should be generated each time the assay is performed.
Storage Instruction	Store at 4°C for 6 months, at -20°C for 12 months. Avoid multiple freeze-thaw cycles.

Applications

- Quantification

Gene Info — DIABLO

Entrez GeneID	56616
Gene Name	DIABLO
Gene Alias	DIABLO-S, FLJ10537, FLJ25049, SMAC, SMAC3
Gene Description	diablo homolog (Drosophila)
Omim ID	605219
Gene Ontology	Hyperlink
Gene Summary	This gene encodes an inhibitor of apoptosis protein (IAP)-binding protein. The encoded mitochondrial protein enters the cytosol when cells undergo apoptosis, and it moderates the caspase inhibition of IAPs. Multiple polyadenylation sites have been found for this gene. Four alternatively spliced transcript variants have been described for this gene, with two of them encoding different isoforms and the other two probably not encoding a protein. [provided by RefSeq]
Other Designations	0610041G12Rik diablo direct IAP-binding protein with low pI mitochondrial Smac protein second mitochondria-derived activator of caspase

Disease

- [Cardiovascular Diseases](#)
- [Diabetes Mellitus](#)
- [Edema](#)