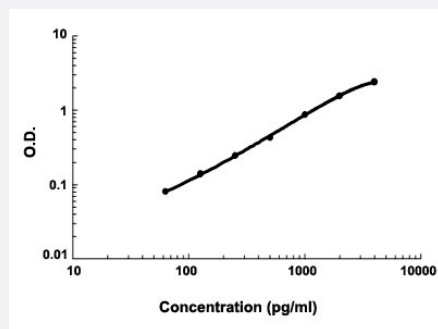


XCL1 (Human) ELISA Kit

Catalog # KA4207 Size 1 Kit

Applications



The standard curve is for the purpose of demonstration only and should not be used to calculate unknowns. A standard curve should be generated each time the assay is performed.

Specification

Product Description	XCL1 (Human) ELISA Kit is a sandwich enzyme immunoassay for the quantitative measurement of human XCL1.
Suitable Sample	Cell culture supernates, Plasma (heparin, EDTA), Serum
Sample Volume	100 μ L
Label	HRP-conjugated
Detection Method	Colorimetric
Assay Type	Quantitative
Calibration Range	62.5 to 4000 pg/mL
Reactivity	Human
Regulation Status	For research use only (RUO)
Quality Control Testing	Standard curve The standard curve is for the purpose of demonstration only and should not be used to calculate unknowns. A standard curve should be generated each time the assay is performed.
Storage Instruction	Store at 4°C for 6 months, at -20°C for 12 months. Avoid multiple freeze-thaw cycles.

Applications

- Quantification

Gene Info — XCL1

Entrez GeneID	6375
Gene Name	XCL1
Gene Alias	ATAC, LPTN, LTN, SCM-1, SCM-1a, SCM1, SCYC1
Gene Description	chemokine (C motif) ligand 1
Omim ID	600250
Gene Ontology	Hyperlink
Gene Summary	member 1 (lymphotactin)
Other Designations	OTTHUMP00000032498 OTTHUMP00000060404 lymphotactin small inducible cytokine subfamily C, member 1 (lymphotactin)

Pathway

- [Chemokine signaling pathway](#)
- [Cytokine-cytokine receptor interaction](#)

Disease

- [Genetic Predisposition to Disease](#)
- [Hypertension](#)
- [Osteoporosis](#)