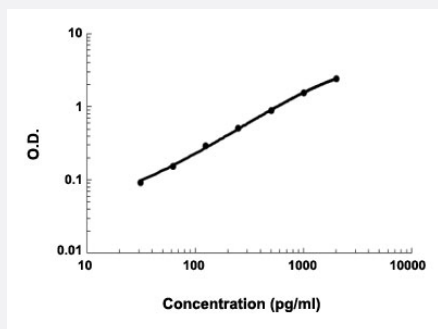


Ccl28 (Mouse) ELISA Kit

Catalog # KA4201 Size 1 Kit

Applications



The standard curve is for the purpose of demonstration only and should not be used to calculate unknowns. A standard curve should be generated each time the assay is performed.

Specification

Product Description	Ccl28 (Mouse) ELISA Kit is a sandwich enzyme immunoassay for the quantitative measurement of mouse Ccl28.
Suitable Sample	Cell culture supernates, Plasma (heparin, EDTA), Serum
Sample Volume	100 μ L
Label	HRP-conjugated
Detection Method	Colorimetric
Assay Type	Quantitative
Calibration Range	31.2 to 2000 pg/mL
Reactivity	Mouse
Regulation Status	For research use only (RUO)
Quality Control Testing	Standard curve The standard curve is for the purpose of demonstration only and should not be used to calculate unknowns. A standard curve should be generated each time the assay is performed.
Storage Instruction	Store at 4°C for 6 months, at -20°C for 12 months. Avoid multiple freeze-thaw cycles.

Applications

- Quantification

Gene Info — Ccl28

Entrez GeneID	56838
Gene Name	Ccl28
Gene Alias	CCK1, MEC, Scya28
Gene Description	chemokine (C-C motif) ligand 28
Gene Ontology	Hyperlink
Other Designations	small inducible cytokine A28