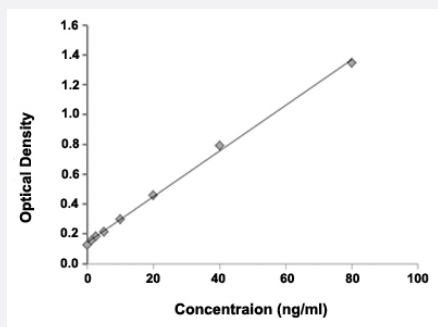


KARS (Human) ELISA Kit

Catalog # KA4173 Size 1 Kit

Applications



The standard curve is for the purpose of demonstration only and should not be used to calculate unknowns. A standard curve should be generated each time the assay is performed.

Specification

Product Description	KARS (Human) ELISA Kit is a sandwich enzymelinked immunosorbent assay for the quantificaion of human KARS.
Suitable Sample	Cell culture supernates, serum and plasma (heparin, EDTA)
Sample Volume	100 ul
Label	HRP-conjugate
Detection Method	Colorimetric
Calibration Range	2.5 ng/ml to 80 ng/ml
Limit of Detection	1.7 ng/ml
Reactivity	Human
Regulation Status	For research use only (RUO)
Quality Control Testing	Standard curve The standard curve is for the purpose of demonstration only and should not be used to calculate unknowns. A standard curve should be generated each time the assay is performed.
Storage Instruction	Store kit at -20°C.

Applications

- Quantification

Gene Info — KARS

Entrez GeneID	3735
Gene Name	KARS
Gene Alias	KARS2, KIAA0070, KRS
Gene Description	lysyl-tRNA synthetase
Omim ID	601421
Gene Ontology	Hyperlink
Gene Summary	<p>Aminoacyl-tRNA synthetases are a class of enzymes that charge tRNAs with their cognate amino acids. Lysyl-tRNA synthetase is a homodimer localized to the cytoplasm which belongs to the class II family of tRNA synthetases. It has been shown to be a target of autoantibodies in the human autoimmune diseases, polymyositis or dermatomyositis. Alternatively spliced transcript variants encoding different isoforms have been found for this gene. [provided by RefSeq]</p>
Other Designations	lysine tRNA ligase

Pathway

- [Aminoacyl-tRNA biosynthesis](#)

Disease

- [Genetic Predisposition to Disease](#)
- [HIV Infections](#)