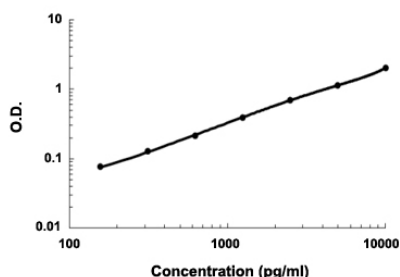


Cd14 (Mouse) ELISA Kit

Catalog # KA4049 Size 1 Kit

Applications



The standard curve is for the purpose of demonstration only and should not be used to calculate unknowns. A standard curve should be generated each time the assay is performed.

Specification

Product Description	Cd14 (Mouse) ELISA Kit is a sandwich enzyme immunoassay for the quantitative measurement of mouse Cd14.
Suitable Sample	Cell culture supernates, Plasma (heparin, EDTA), Serum
Sample Volume	100 μ L
Label	HRP-conjugated
Detection Method	Colorimetric
Assay Type	Quantitative
Calibration Range	156 pg/ml to 10000 pg/ml
Reactivity	Mouse
Regulation Status	For research use only (RUO)
Quality Control Testing	Standard curve The standard curve is for the purpose of demonstration only and should not be used to calculate unknowns. A standard curve should be generated each time the assay is performed.
Storage Instruction	Store at 4°C for 6 months, at -20°C for 12 months. Avoid multiple freeze-thaw cycles.

Applications

- Quantification

Gene Info — Cd14

Entrez GeneID	12475
---------------	-----------------------

Gene Name	Cd14
-----------	------

Gene Alias	-
------------	---

Gene Description	CD14 antigen
------------------	--------------

Gene Ontology	Hyperlink
---------------	---------------------------

Other Designations	-
--------------------	---