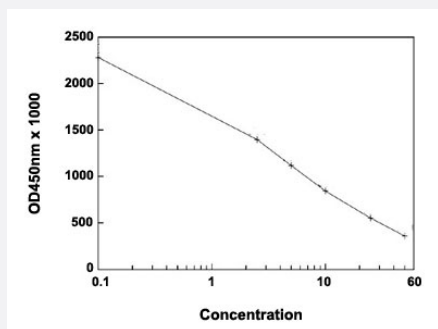


MUC1 (M20) ELISA Kit

Catalog # KA4021 Size 1 Kit

Applications



The standard curve is for the purpose of demonstration only and should not be used to calculate unknowns. A standard curve should be generated each time the assay is performed.

Specification

Product Description	MUC1 (M20) ELISA Kit is a solid-phase enzyme immunoassay for the quantitative detection of MUC 1 (M20).
Suitable Sample	Plasma (ACD- or heparinized) and Serum
Sample Volume	50 ul
Label	HRP-conjugate
Detection Method	Colorimetric
Assay Type	Quantitative
Calibration Range	2.5 U/ml to 50 U/ml
Limit of Detection	1 U/ml
Regulation Status	For research use only (RUO)
Quality Control Testing	Standard curve The standard curve is for the purpose of demonstration only and should not be used to calculate unknowns. A standard curve should be generated each time the assay is performed.
Storage Instruction	Store the kit at 4°C.

Applications

- Quantification