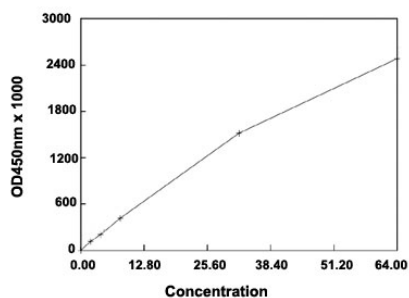


# CEA ELISA Kit

Catalog # KA4017      Size 1 Kit

## Applications



The standard curve is for the purpose of demonstration only and should not be used to calculate unknowns. A standard curve should be generated each time the assay is performed.

## Specification

<b>Product Description</b>	CEA ELISA Kit is a solid-phase enzyme immunoassay for the quantitative detection of carcinoembryonic antigen.
<b>Suitable Sample</b>	Plasma (ACD- or heparinized) and Serum
<b>Sample Volume</b>	50 ul
<b>Label</b>	HRP-conjugate
<b>Detection Method</b>	Colorimetric
<b>Assay Type</b>	Quantitative
<b>Calibration Range</b>	2 to 64 ng/mL
<b>Limit of Detection</b>	0.5 ng/mL
<b>Regulation Status</b>	For research use only (RUO)
<b>Quality Control Testing</b>	Standard curve The standard curve is for the purpose of demonstration only and should not be used to calculate unknowns. A standard curve should be generated each time the assay is performed.
<b>Storage Instruction</b>	Store the kit at 4°C.

## Applications

- Quantification