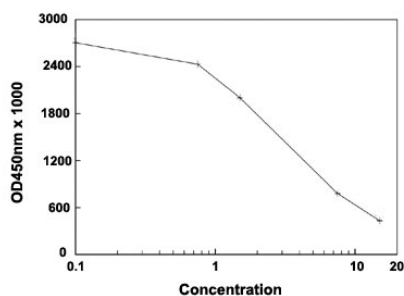


T3 ELISA Kit

Catalog # KA4010 Size 1 Kit

Applications



The standard curve is for the purpose of demonstration only and should not be used to calculate unknowns. A standard curve should be generated each time the assay is performed.

Specification

Product Description	T3 ELISA Kit is a solid-phase enzyme immunoassay for the quantitative detection of triiodothyronine in human blood serum or plasma.
Suitable Sample	Plasma and Serum
Sample Volume	25 μ L
Label	HRP-conjugate
Detection Method	Colorimetric
Assay Type	Quantitative
Calibration Range	0.75 to 15 nmol/L
Regulation Status	For research use only (RUO)
Storage Instruction	Store the kit at 4°C.

Applications

- Quantification