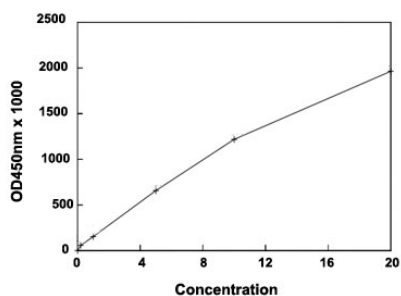


TSH ELISA Kit

Catalog # KA4001 Size 1 Kit

Applications



The standard curve is for the purpose of demonstration only and should not be used to calculate unknowns. A standard curve should be generated each time the assay is performed.

Specification

Product Description	TSH ELISA Kit is a solid-phase enzyme immunoassay for the quantitative detection of TSH.
Suitable Sample	Plasma (ACD- or heparinized) and Serum
Sample Volume	50 ul
Label	HRP-conjugate
Detection Method	Colorimetric
Assay Type	Quantitative
Calibration Range	0.2 mIU/l to 20 mIU/l
Limit of Detection	0.08 mIU/l
Regulation Status	For research use only (RUO)
Quality Control Testing	Standard curve The standard curve is for the purpose of demonstration only and should not be used to calculate unknowns. A standard curve should be generated each time the assay is performed.
Storage Instruction	Store the kit at 4°C.

Applications

- Quantification