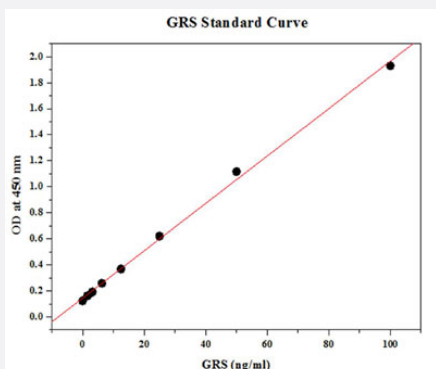


GARS (Human) ELISA Kit

Catalog # KA3927

Size 1 Kit

Applications



The standard curve is for the purpose of demonstration only and should not be used to calculate unknowns. A standard curve should be generated each time the assay is performed.

Specification

Product Description

GARS (Human) ELISA Kit is a sandwich enzyme immunoassay for the quantitative measurement of Human GARS.

Suitable Sample

Cell Lysate, Serum

Sample Volume

100 μ L

Label

HRP-conjugated

Detection Method

Colorimetric

Assay Type

Quantitative

Calibration Range

1.57 to 100 ng/mL

Limit of Detection

2.5 ng/mL

Reactivity

Human

Regulation Status

For research use only (RUO)

Quality Control Testing

Standard Curve

The standard curve is for the purpose of demonstration only and should not be used to calculate unknowns. A standard curve should be generated each time the assay is performed.

Storage Instruction

Store the kit at -20°C. For best results, please store the components as described in the protocol. Avoid repeated freezing and thawing.

Applications

- Quantification

Gene Info — GARS

Entrez GeneID [2617](#)

Gene Name GARS

Gene Alias CMT2D, DSMAV, GlyRS, HMN5, SMAD1

Gene Description glycyl-tRNA synthetase

Omim ID [600287](#) [600794](#) [601472](#)

Gene Ontology [Hyperlink](#)

Gene Summary This gene encodes glycyl-tRNA synthetase, one of the aminoacyl-tRNA synthetases that charge tRNAs with their cognate amino acids. The encoded enzyme is an (alpha)2 dimer which belongs to the class II family of tRNA synthetases. It has been shown to be a target of autoantibodies in the human autoimmune diseases, polymyositis or dermatomyositis. [provided by RefSeq]

Other Designations Charcot-Marie-Tooth neuropathy 2D|Charcot-Marie-Tooth neuropathy, neuronal type, D|glycine tRNA ligase

Pathway

- [Aminoacyl-tRNA biosynthesis](#)

Disease

- [Charcot-Marie-Tooth Disease](#)
- [Kidney Failure](#)