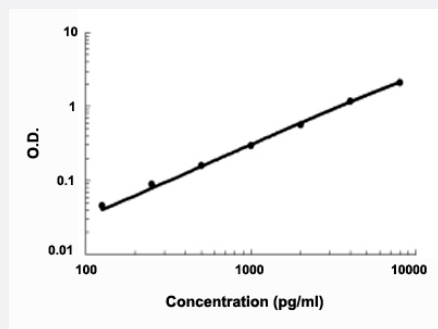


IL28A (Human) ELISA Kit

Catalog # KA3911 Size 1 Kit

Applications



The standard curve is for the purpose of demonstration only and should not be used to calculate unknowns. A standard curve should be generated each time the assay is performed.

Specification

Product Description	IL28A (Human) ELISA Kit is a sandwich enzyme immunoassay for the quantitative measurement of human IL28A.
Suitable Sample	Cell culture supernates, serum and plasma (heparin, EDTA)
Sample Volume	100 μ L
Label	HRP-conjugated
Detection Method	Colorimetric
Assay Type	Quantitative
Calibration Range	125 to 8000 pg/ml
Reactivity	Human
Regulation Status	For research use only (RUO)
Quality Control Testing	Standard curve The standard curve is for the purpose of demonstration only and should not be used to calculate unknowns. A standard curve should be generated each time the assay is performed.
Storage Instruction	Store at 4°C for 6 months, at -20°C for 12 months. Avoid multiple freeze-thaw cycles.

Applications

- Quantification

Gene Info — IL28A

Entrez GeneID	282616
Gene Name	IL28A
Gene Alias	IFNL2, IL-28A
Gene Description	interleukin 28A (interferon, lambda 2)
Omim ID	607401
Gene Ontology	Hyperlink
Gene Summary	<p>This gene encodes a cytokine distantly related to type I interferons and the IL-10 family. This gene, interleukin 28B (IL28B), and interleukin 29 (IL29) are three closely related cytokine genes that form a cytokine gene cluster on a chromosomal region mapped to 19q13. Expression of the cytokines encoded by the three genes can be induced by viral infection. All three cytokines have been shown to interact with a heterodimeric class II cytokine receptor that consists of interleukin 10 receptor, beta (IL10RB) and interleukin 28 receptor, alpha (IL28RA). [provided by RefSeq]</p>
Other Designations	interferon lambda 2 interferon-lambda 2 interleukin 28A

Pathway

- [Cytokine-cytokine receptor interaction](#)
- [Jak-STAT signaling pathway](#)

Disease

- [Hepatitis C](#)