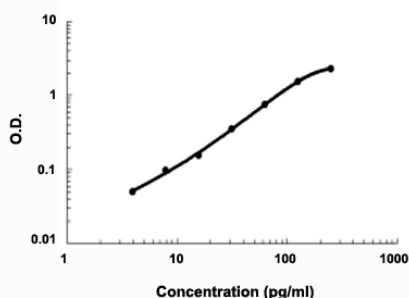


Edn1 (Mouse) ELISA Kit

Catalog # KA3901 Size 1 Kit

Applications



The standard curve is for the purpose of demonstration only and should not be used to calculate unknowns. A standard curve should be generated each time the assay is performed.

Specification

| | |
|--------------------------------|--|
| Product Description | Edn1 (Mouse) ELISA Kit is a sandwich enzyme immunoassay for the quantitative measurement of mouse Edn1. |
| Suitable Sample | Cell culture supernates, serum and plasma (heparin, EDTA) |
| Sample Volume | 100 μ L |
| Label | HRP-conjugated |
| Detection Method | Colorimetric |
| Assay Type | Quantitative |
| Calibration Range | 3.9 to 250 pg/ml |
| Reactivity | Mouse |
| Regulation Status | For research use only (RUO) |
| Quality Control Testing | Standard curve The standard curve is for the purpose of demonstration only and should not be used to calculate unknowns. A standard curve should be generated each time the assay is performed. |
| Storage Instruction | Store at 4°C for 6 months, at -20°C for 12 months. Avoid multiple freeze-thaw cycles. |

Applications

- Quantification

Gene Info — Edn1

| | |
|---------------|-----------------------|
| Entrez GeneID | 13614 |
|---------------|-----------------------|

| | |
|-----------|------|
| Gene Name | Edn1 |
|-----------|------|

| | |
|------------|----------------|
| Gene Alias | ET-1, preproET |
|------------|----------------|

| | |
|------------------|--------------|
| Gene Description | endothelin 1 |
|------------------|--------------|

| | |
|---------------|---------------------------|
| Gene Ontology | Hyperlink |
|---------------|---------------------------|

| | |
|--------------------|------------------|
| Other Designations | preproendothelin |
|--------------------|------------------|