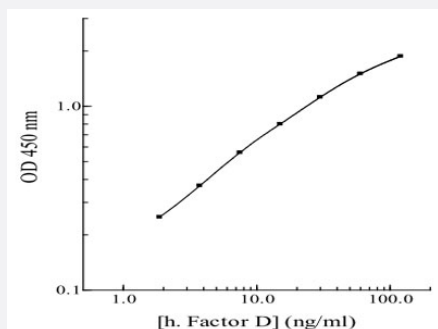


# CFD (Human) ELISA Kit

Catalog # KA3823      Size 1 Kit

## Applications



The standard curve is for the purpose of demonstration only and should not be used to calculate unknowns. A standard curve should be generated each time the assay is performed.

## Specification

|                            |                                                                                                       |
|----------------------------|-------------------------------------------------------------------------------------------------------|
| <b>Product Description</b> | CFD (Human) ELISA Kit is a sandwich enzyme immunoassay for the quantitative measurement of human CFD. |
| <b>Suitable Sample</b>     | Cell Culture, Milk, Plasma, Saliva, Serum                                                             |
| <b>Sample Volume</b>       | 50 $\mu$ L                                                                                            |
| <b>Label</b>               | Peroxidase-conjugated                                                                                 |
| <b>Detection Method</b>    | Colorimetric                                                                                          |
| <b>Assay Type</b>          | Quantitative                                                                                          |
| <b>Intra-Assay</b>         | 4.8%                                                                                                  |
| <b>Inter-Assay</b>         | 7.1%                                                                                                  |
| <b>Spiking Recovery</b>    | 97%                                                                                                   |
| <b>Reactivity</b>          | Human                                                                                                 |
| <b>Regulation Status</b>   | For research use only (RUO)                                                                           |

**Quality Control Testing**

## Standard curve

The standard curve is for the purpose of demonstration only and should not be used to calculate unknowns. A standard curve should be generated each time the assay is performed.

**Storage Instruction**

Store the kit at 4°C. For long term storage, please store at -20°C.

## Applications

- Quantification

## Gene Info — CFD

**Entrez GeneID** [1675](#)

**Gene Name** CFD

**Gene Alias** ADIPSIN, ADN, DF, PFD

**Gene Description** complement factor D (adipsin)

**Omim ID** [134350](#)

**Gene Ontology** [Hyperlink](#)

**Gene Summary** The protein encoded by this gene is a member of the trypsin family of peptidases. The encoded protein is a component of the alternative complement pathway best known for its role in humoral suppression of infectious agents. This protein is also a serine protease that is secreted by adipocytes into the bloodstream. Finally, the encoded protein has a high level of expression in fat, suggesting a role for adipose tissue in immune system biology. [provided by RefSeq]

**Other Designations** C3 convertase activator|D component of complement (adipsin)|complement factor D|complement factor D preproprotein|properdin factor D

## Pathway

- [Complement and coagulation cascades](#)

## Disease

- [Cardiovascular Diseases](#)

- [Coronary Disease](#)
- [Diabetes Mellitus](#)
- [Edema](#)
- [Genetic Predisposition to Disease](#)
- [Lymphoma](#)