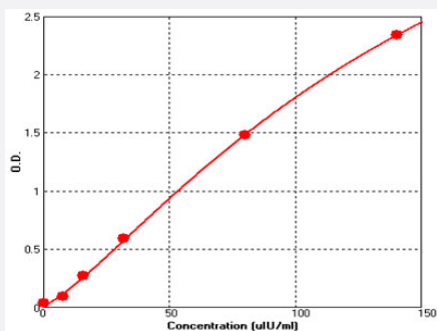


# Insulin (Rat) ELISA Kit

Catalog # KA3811      Size 1 Kit

## Applications



The standard curve is for the purpose of demonstration only and should not be used to calculate unknowns. A standard curve should be generated each time the assay is performed.

## Specification

<b>Product Description</b>	Insulin (Rat) ELISA Kit is a sandwich enzyme immunoassay for the quantitative measurement of rat insulin.
<b>Suitable Sample</b>	Body Fluid, Cell Culture Supernatant, Plasma, Serum, Tissue Lysates
<b>Sample Volume</b>	50 uL
<b>Label</b>	HRP-conjugated
<b>Detection Method</b>	Colorimetric
<b>Assay Type</b>	Quantitative
<b>Calibration Range</b>	0 uIU/ml to 140 uIU/ml
<b>Limit of Detection</b>	< 5 uIU/ml
<b>Reactivity</b>	Rat
<b>Regulation Status</b>	For research use only (RUO)
<b>Quality Control Testing</b>	Standard curve The standard curve is for the purpose of demonstration only and should not be used to calculate unknowns. A standard curve should be generated each time the assay is performed.

**Storage Instruction**

Store the kit at 4°C.

## Applications

- Quantification

## Publication Reference

- [The therapeutic effects of bee venom on some metabolic and antioxidant parameters associated with HFD-induced non-alcoholic fatty liver in rats.](#)

Hanafi MY, Zaher ELM, El-Adely SEM, Sakr A, Ghobashi AHM, Hemly MH, Kazem AH, Kamel MA.

Experimental and Therapeutic Medicine 2018 Jun; 15(6):5091.

Application: ELISA, Rat, Serum

- [Black Seed Thymoquinone Improved Insulin Secretion, Hepatic Glycogen Storage, and Oxidative Stress in Streptozotocin-Induced Diabetic Male Wistar Rats.](#)

Abdelrazek HMA, Kilany OE, Muhammad MAA, Tag HM, Abdelazim AM.

Oxidative Medicine and Cellular Longevity 2018 Mar; 2018:8104165.

Application: Quant, Rat, Rat serum

- [Identification of Components in Frog Skin Secretions with Therapeutic Potential as Antidiabetic Agents.](#)

Conlon JM, Moffett RC, Leprince J, Flatt PR.

Methods in Molecular Biology (Clifton, N.J.) 2018 Feb; 1719:319.

Application: ELISA, Rat, BRIN-BD11 cells

- [Effects of crocin and voluntary exercise, alone or combined, on heart VEGF-A and HOMA-IR of HFD/STZ induced type 2 diabetic rats.](#)

Ghorbanzadeh V, Mohammadi M, Dariushnejad H, Chodari L, Mohaddes G.

Journal of Endocrinological Investigation 2016 Apr; 39(10):1179.

Application: Quan, Rat, Serum from diabetic rat

- [Effect of Cichorium intybus L. on the expression of hepatic NF- \$\kappa\$ B and IKK \$\beta\$  and serum TNF- \$\alpha\$  in STZ- and STZ+ niacinamide-induced diabetes in rats.](#)

Rezagholizadeh L, Pourfarjam Y, Nowrouzi A, Nakhjavani M, Meysamie A, Ziamajidi N, Nowrouzi P.

Diabetology & Metabolic Syndrome 2016 Feb; 8(11):1.

Application: ELISA, Rat, Rat serum