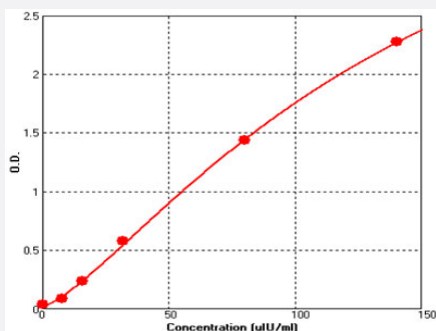


Insulin (Human) ELISA Kit

Catalog # KA3810

Size 1 Kit

Applications



The standard curve is for the purpose of demonstration only and should not be used to calculate unknowns. A standard curve should be generated each time the assay is performed.

Specification

Product Description	Insulin (Human) ELISA Kit is a sandwich enzyme immunoassay for the quantitative measurement of human insulin.
Suitable Sample	Body Fluid, Cell Culture Supernatant, Plasma, Serum, Tissue Lysates
Sample Volume	50 μ L
Label	HRP-conjugated
Detection Method	Colorimetric
Assay Type	Quantitative
Calibration Range	0 uIU/ml to 140 uIU/ml
Limit of Detection	< 5 uIU/ml
Reactivity	Human
Regulation Status	For research use only (RUO)
Quality Control Testing	Standard curve The standard curve is for the purpose of demonstration only and should not be used to calculate unknowns. A standard curve should be generated each time the assay is performed.

Storage Instruction

Store the kit at 4°C.

Applications

- Quantification

Publication Reference

- [Hybrid Neuromuscular Training Improves Cardiometabolic Health and Alters Redox Status in Inactive Overweight and Obese Women: A Randomized Controlled Trial.](#)

Alexios Batrakoulis, Athanasios Z Jamurtas, Dimitrios Draganidis, Kalliopi Georgakouli, Panagiotis Tsimeas, Athanasios Poullos, Niki Syrou, Chariklia K Deli, Konstantinos Papanikolaou, Symeon Tournis, Ioannis G Fatouros.

Antioxidants 2021 Oct; 10(10):1601.

Application: Quant, Human, Human serum