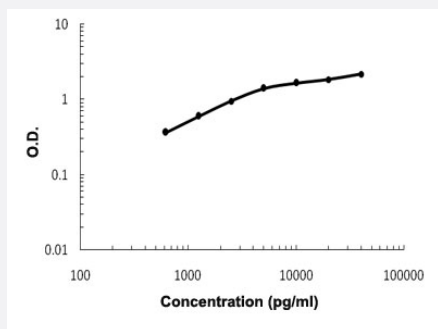


Sell (Rat) ELISA Kit

Catalog # KA3684 Size 1 Kit

Applications



The standard curve is for the purpose of demonstration only and should not be used to calculate unknowns. A standard curve should be generated each time the assay is performed.

Specification

Product Description	Sell (Rat) is a sandwich enzyme immunoassay for the quantitative measurement of rat Sell.
Suitable Sample	Cell Culture Supernatant, Plasma (Heparin, EDTA), Serum
Sample Volume	100 ul
Label	HRP-conjugated
Detection Method	Colorimetric
Assay Type	Quantitative
Calibration Range	625 to 40,000 pg/ml
Reactivity	Rat
Regulation Status	For research use only (RUO)
Quality Control Testing	Standard curve The standard curve is for the purpose of demonstration only and should not be used to calculate unknowns. A standard curve should be generated each time the assay is performed.
Storage Instruction	Store at 4°C for 6 months, at -20°C for 12 months. Avoid multiple freeze-thaw cycles.

Applications

- Quantification

Gene Info — Sell

Entrez GeneID	29259
---------------	-----------------------

Gene Name	Sell
-----------	------

Gene Alias	A.11, L-selectin, LECAM-1
------------	---------------------------

Gene Description	selectin, lymphocyte
------------------	----------------------

Gene Ontology	Hyperlink
---------------	---------------------------

Gene Summary	O
--------------	---

Other Designations	-
--------------------	---