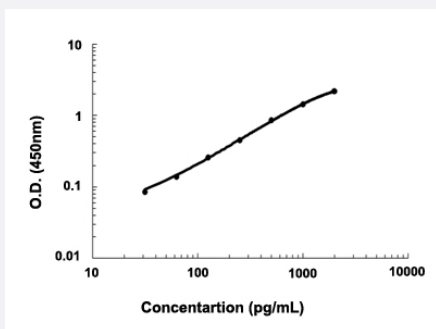


IL33 (Mouse) ELISA Kit

Catalog # KA3411 Size 1 Kit

Applications



The standard curve is for the purpose of demonstration only and should not be used to calculate unknowns. A standard curve should be generated each time the assay is performed.

Specification

Product Description	IL33 (Mouse) ELISA Kit is a sandwich enzyme immunoassay for the quantitative measurement of mouse IL33.
Suitable Sample	Cell Culture Supernate, Plasma (EDTA, Heparin), Serum
Sample Volume	100 μ L
Label	HRP-conjugated
Detection Method	Colorimetric
Assay Type	Quantitative
Calibration Range	31.2 to 2000 pg/mL
Reactivity	Mouse
Regulation Status	For research use only (RUO)
Quality Control Testing	Standard curve The standard curve is for the purpose of demonstration only and should not be used to calculate unknowns. A standard curve should be generated each time the assay is performed.
Storage Instruction	Store at 4°C for 6 months, at -20°C for 12 months. Avoid multiple freeze-thaw cycles.

Applications

- Quantification

Gene Info — Il33

Entrez GeneID	77125
---------------	-----------------------

Gene Name	Il33
-----------	------

Gene Alias	9230117N10Rik, Il-33, Il1f11, NF-HEV
------------	--------------------------------------

Gene Description	interleukin 33
------------------	----------------

Gene Ontology	Hyperlink
---------------	---------------------------

Other Designations	nuclear factor from high endothelial venules
--------------------	--