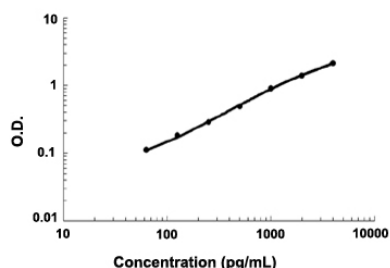


# Lgals3 (Mouse) ELISA Kit

Catalog # KA3369      Size 1 Kit

## Applications



The standard curve is for the purpose of demonstration only and should not be used to calculate unknowns. A standard curve should be generated each time the assay is performed.

## Specification

<b>Product Description</b>	Lgals3 (Mouse) ELISA Kit is a sandwich enzyme immunoassay for the quantitative measurement of mouse Lgals3.
<b>Suitable Sample</b>	Cell Culture Supernate, Plasma (EDTA, Heparin), Serum
<b>Sample Volume</b>	100 $\mu$ L
<b>Label</b>	HRP-conjugated
<b>Detection Method</b>	Colorimetric
<b>Assay Type</b>	Quantitative
<b>Calibration Range</b>	62.5 to 4000 pg/mL
<b>Reactivity</b>	Mouse
<b>Regulation Status</b>	For research use only (RUO)
<b>Quality Control Testing</b>	Standard curve The standard curve is for the purpose of demonstration only and should not be used to calculate unknowns. A standard curve should be generated each time the assay is performed.
<b>Storage Instruction</b>	Store at 4°C for 6 months, at -20°C for 12 months. Avoid multiple freeze-thaw cycles.

## Applications

- Quantification

## Gene Info — Lgals3

Entrez GeneID	<a href="#">16854</a>
---------------	-----------------------

Gene Name	Lgals3
-----------	--------

Gene Alias	GBP, L-34, Mac-2, gal3
------------	------------------------

Gene Description	lectin, galactose binding, soluble 3
------------------	--------------------------------------

Gene Ontology	<a href="#">Hyperlink</a>
---------------	---------------------------

Gene Summary	galactose binding
--------------	-------------------

Other Designations	galectin 3
--------------------	------------