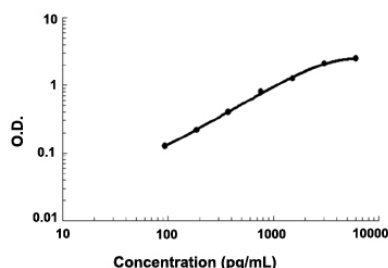


Ace (Mouse) ELISA Kit

Catalog # KA3365 Size 1 Kit

Applications



The standard curve is for the purpose of demonstration only and should not be used to calculate unknowns. A standard curve should be generated each time the assay is performed.

Specification

Product Description	Ace (Mouse) ELISA Kit is a sandwich enzyme immunoassay for the quantitative measurement of mouse Ace.
Suitable Sample	Cell Culture Supernate, Plasma (Heparin), Serum
Sample Volume	100 μ L
Label	HRP-conjugated
Detection Method	Colorimetric
Assay Type	Quantitative
Calibration Range	93.8 to 6000 pg/mL
Reactivity	Mouse
Regulation Status	For research use only (RUO)
Quality Control Testing	Standard curve The standard curve is for the purpose of demonstration only and should not be used to calculate unknowns. A standard curve should be generated each time the assay is performed.
Storage Instruction	Store at 4°C for 6 months, at -20°C for 12 months. Avoid multiple freeze-thaw cycles.

Applications

- Quantification

Gene Info — Ace

Entrez GeneID	11421
Gene Name	Ace
Gene Alias	AW208573, CD143, MGC117827
Gene Description	angiotensin I converting enzyme (peptidyl-dipeptidase A) 1
Gene Ontology	Hyperlink
Other Designations	OTTMUSP00000003021 OTTMUSP00000003023 angiotensin converting enzyme dipeptidyl peptidase

Publication Reference

- [Fasudil attenuates soluble fms-like tyrosine kinase-1 \(sFlt-1\)-induced hypertension in pregnant mice through RhoA/ROCK pathway.](#)

Gu Y, Feng Y, Yu J, Yuan H, Yin Y, Ding J, Zhao J, Xu Y, Xu J, Che H.

Oncotarget 2017 Oct; 8(61):104104.

Application: Quant, Mouse, Serum from pregnant mice