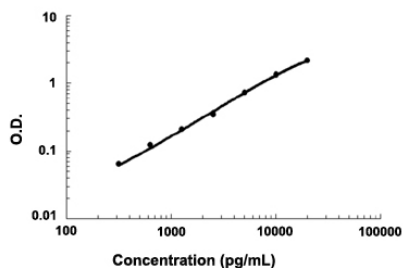


Clu (Mouse) ELISA Kit

Catalog # KA3355 Size 1 Kit

Applications



The standard curve is for the purpose of demonstration only and should not be used to calculate unknowns. A standard curve should be generated each time the assay is performed.

Specification

Product Description	Clu (Mouse) ELISA Kit is a sandwich enzyme immunoassay for the quantitative measurement of mouse Clu.
Suitable Sample	Cell Culture Supernate, Cell Lysates, Plasma (EDTA, Heparin), Serum
Sample Volume	100 μ L
Label	HRP-conjugated
Detection Method	Colorimetric
Assay Type	Quantitative
Calibration Range	312 to 20000 pg/mL
Reactivity	Mouse
Regulation Status	For research use only (RUO)
Storage Instruction	Store at 4°C for 6 months, at -20°C for 12 months. Avoid multiple freeze-thaw cycles.

Applications

- Quantification

Gene Info — Clu

Entrez GeneID	12759
Gene Name	Clu
Gene Alias	A1893575, ApoJ, Cli, D14Ucla3, SP-40, Sgp-2, Sgp2, Sugp-2
Gene Description	clusterin
Gene Ontology	Hyperlink
Other Designations	Apolipoprotein J complement lysis inhibitor testosterone repressed prostate message

Publication Reference

- [Physical exercise modulates the microglial complement pathway in mice to relieve cortical circuitry deficits induced by mutant human TDP-43.](#)

Ji-An Wei, Linglin Liu, Xichen Song, Bilian Lin, Jing Cui, Lanzhi Luo, Yuchu Liu, Shihua Li, Xiaojiang Li, Kwok-Fai So, Sen Yan, Li Zhang.

Cell Reports 2023 Mar; 42(3):112240.

Application: Quant, Mouse, Mouse serum