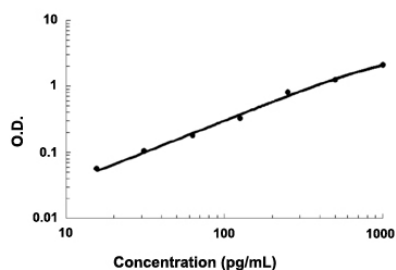


# Cxcl5 (Mouse) ELISA Kit

Catalog # KA3354      Size 1 Kit

## Applications



The standard curve is for the purpose of demonstration only and should not be used to calculate unknowns. A standard curve should be generated each time the assay is performed.

## Specification

<b>Product Description</b>	Cxcl5 (Mouse) ELISA Kit is a sandwich enzyme immunoassay for the quantitative measurement of mouse Cxcl5.
<b>Suitable Sample</b>	Cell Culture Supernate, Plasma (Citrate, EDTA, Heparin), Serum
<b>Sample Volume</b>	100 $\mu$ L
<b>Label</b>	HRP-conjugated
<b>Detection Method</b>	Colorimetric
<b>Assay Type</b>	Quantitative
<b>Calibration Range</b>	15.6 to 1000 pg/mL
<b>Reactivity</b>	Mouse
<b>Regulation Status</b>	For research use only (RUO)
<b>Quality Control Testing</b>	Standard curve The standard curve is for the purpose of demonstration only and should not be used to calculate unknowns. A standard curve should be generated each time the assay is performed.
<b>Storage Instruction</b>	Store at 4°C for 6 months, at -20°C for 12 months. Avoid multiple freeze-thaw cycles.

## Applications

- Quantification

## Gene Info — Cxcl5

Entrez GeneID	<a href="#">20311</a>
Gene Name	Cxcl5
Gene Alias	AMCF-II, ENA-78, GCP-2, LIX, Scyb5, Scyb6
Gene Description	chemokine (C-X-C motif) ligand 5
Gene Ontology	<a href="#">Hyperlink</a>
Gene Summary	member 5 small inducible cytokine subfamily B
Other Designations	granulocyte chemotactic protein-2 small inducible cytokine B subfamily, member 5 small inducible cytokine subfamily B, member 15